

Field Mapping Workflow Documentation

Use this guide for mapping your parcel or zoning attributes to the statewide parcel schema.

Why is This Guide Necessary?

This guide may be useful if you have PARCEL data formatted to the schema specifications of the Parcel Initiative but the fields do not have any of the following qualities:

- FIELD NAME
- ALIAS NAME
- DATA TYPE and/or PRECISION

1 Download the template schema

In order to appropriately map your parcel attributes to the statewide attribute schemas, download the templates from: www.sco.wisc.edu/parcels/GISTemplates.zip

Note on CRS. The feature class templates within this download package are formatted with the Statewide Parcel Initiative’s Coordinate Reference System (CRS), which is [NAD_1983_HARN_Wisconsin_TM](#). More details about the CRS can be found in the [Submission Documentation](#).

Next, open ArcCatalog and navigate to the location of the template download in the catalog tree. The templates are located in a file geodatabase named GISTemplates. Make a copy of the template you plan on mapping your attribute data to and name the copy appropriately. NOTE: For data submission, the parcel dataset is expected to be named PARCELS as documented in the [Submission Documentation](#).

2 Project native data to Statewide Parcel CRS

The statewide parcel data submission requires that the submitted data be transformed from its native coordinate reference system to that of the final statewide parcel layer. As mentioned in section #1 of this document, the [GISTemplates](#) already exist in the Statewide Parcel Initiative’s CRS. Before proceeding to step #3, make sure to project your native parcel data to that of the Statewide Parcel Initiative. These steps are as follows:

- 1) Open ArcCatalog and find the [Project tool](#), by typing “Project” into the **Search** tool. The “Project (Data Management)” tool should come up as one of the options (Figure 1):

NOTE – the Project (Data Management) tool can also be found within:

[Toolboxes\System Toolboxes\Data Management Tools.tbx\Projections and Transformations\Project](#)

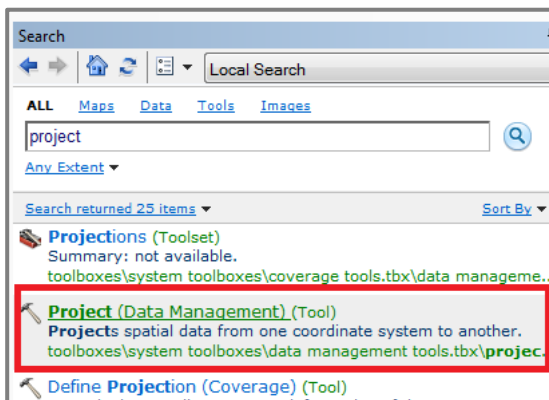


Figure 1. Searching to Locate the Project (Data Management) Tool

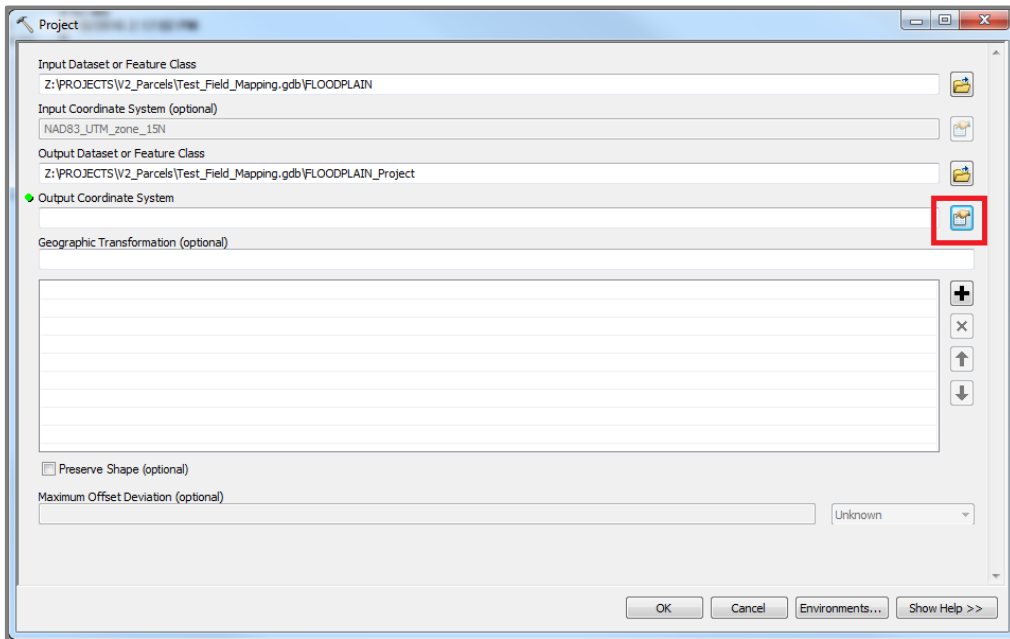


Figure 2. (above)

2) Open the “Project (Data Management)” tool and populate its parameters accordingly. To specify the Output Coordinate System, it is easiest to import the Statewide Parcel CRS from the template files. To do so, click on the *Spatial Reference Properties* button in the tool (Figure 2) to open the *Spatial Reference Properties* dialogue.

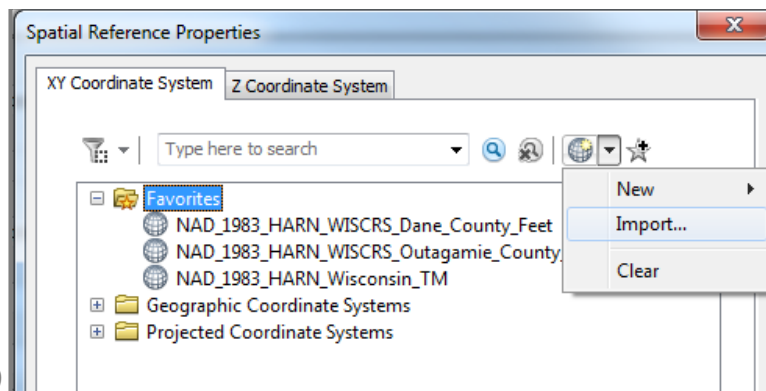


Figure 3. (right)

3) From within the *Spatial Reference Properties* dialogue, choose the *Import...* option (Figure 3).

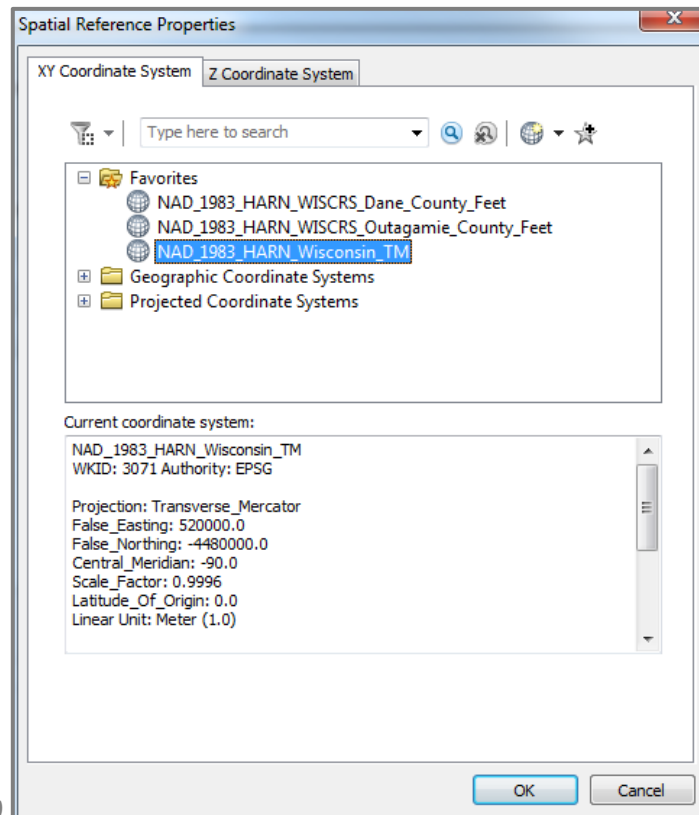


Figure 4. (right)

4) Navigate to one of the *GISTemplate.gdb* template files and click OK. The result should look like Figure 4.

- 5) With the Output Coordinate System set, define a Geographic Transformation, if applicable (Figure 5):

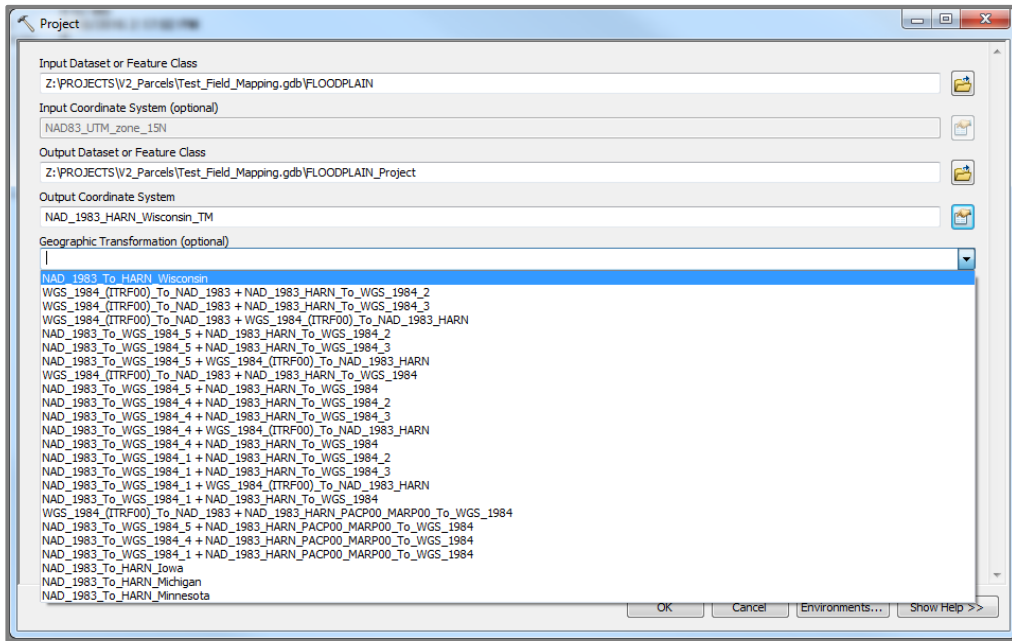


Figure 5.

- 6) **NOTE** – Using the “*Preserve Shape (Optional)*” function is not recommended. This function will explode parametric arcs into point to point geometries and also has the potential to add many vertices to the parcel features. While this function has the potential to solidify the precision and accuracy of geometries, it is not recommended. Although it is not recommended, the submitter may use their discretion in choosing the preserve shape option or in choosing the geometric transformation.
- 7) Press OK to run the tool. Proceed with processing on the output.

③ Run simple data loader

After you have re-projected or confirmed the projection of the native data, it is time to run the simple data loader. In the catalog tree, navigate to the feature class template created in step 1, *right-click* on the feature class and *select* *Load > Load Data...* (Figure 6).

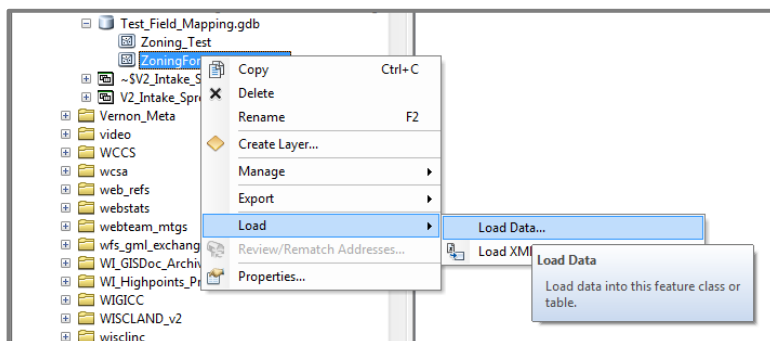


Figure 6.

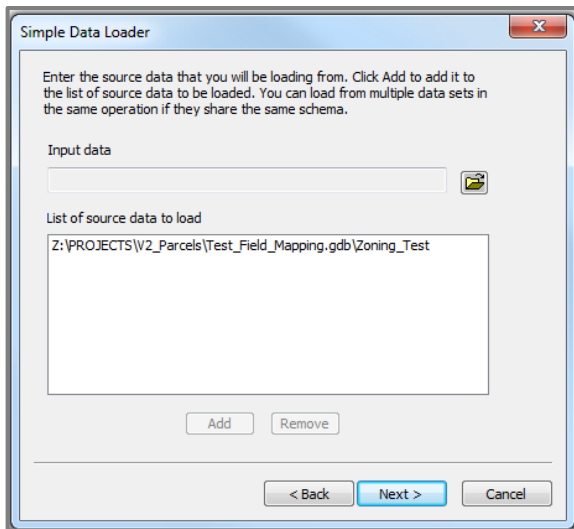


Figure 7.

A Simple Data Loader wizard will appear. The first screen gives a brief introduction to the wizard. Feel free to skip this screen in the future. *Select* Next to enter the source data. You can load from multiple data sources if necessary. Remember to *select Add* to load the source data for the next step (Figure 7).

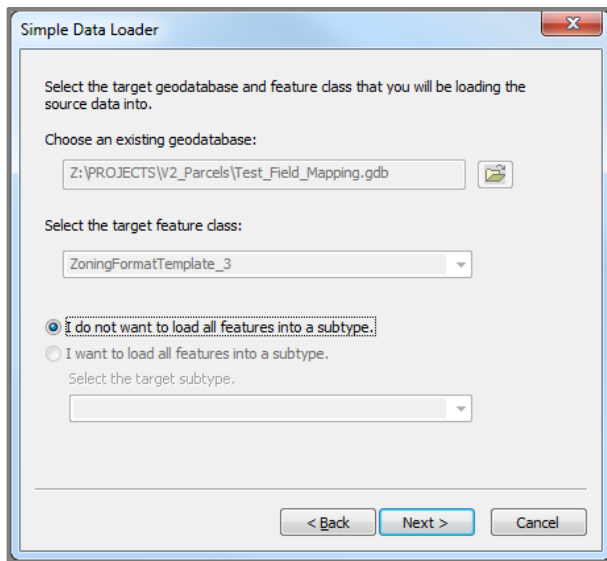


Figure 8.

After clicking Next again, the screen will prompt you to *select* the output geodatabase and feature class for the mapping (Figure 8). Since you already selected this feature class to start the wizard, the fields will be filled in.

Confirm the outputs are correct before proceeding to the next screen.

Now you will be prompted to map the native fields (**Matching Source Field**) to the output fields (**Target Field**). By default, the wizard will map any fields with the same name and type. To change a mapping, *click* on the matching source field and select from the drop-down of available fields (Figure 9).

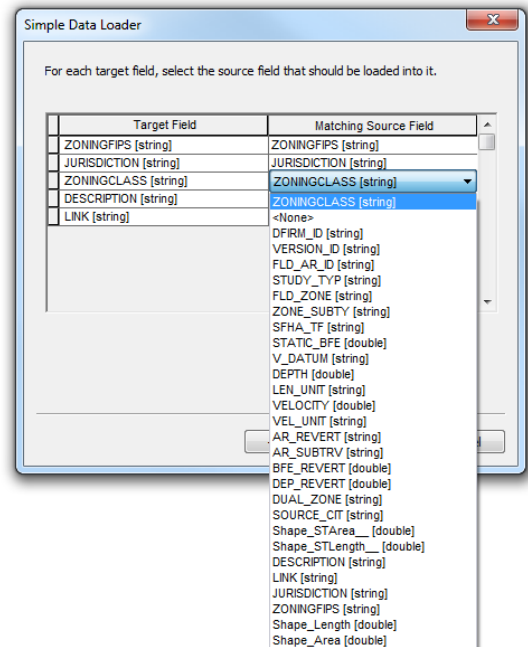


Figure 9.

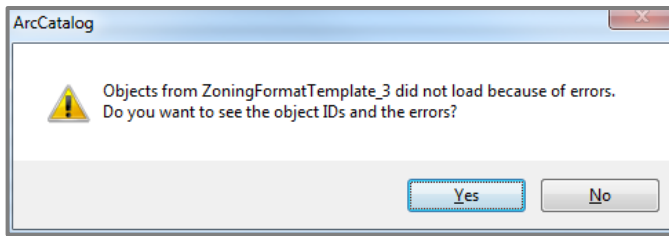


Figure 10.

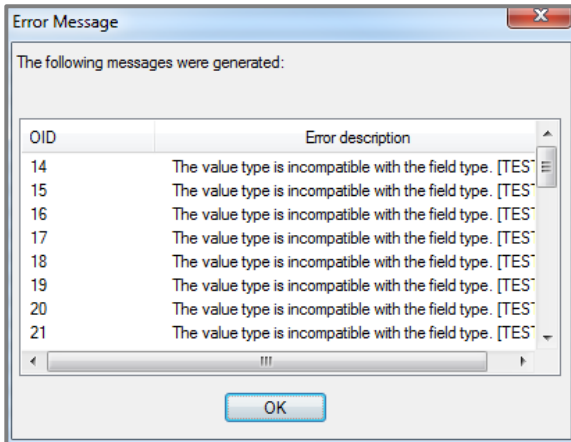


Figure 11.

NOTE –The wizard does allow type casting of the fields. For example, if the PARCELFIPS in the native data is a double, the wizard will cast the values to string in the output feature class. If an invalid cast is made (e.g., string containing non-numeric characters » double) or some records in a field cannot be cast, an error will appear when completing the wizard (Figure 10). The records that include errors will not be mapped to the output feature class. A message will list the records that failed to write to the new feature class (Figure 11).

After *clicking Next* for a fourth time, you will be prompted to load all of the source data (default) or query only the feature that satisfy a query. Since we a mapping all records, the default is the appropriate choice (Figure 12).

The final screen allows you to review the operation before *clicking Finish* to run the wizard (Figure 13).

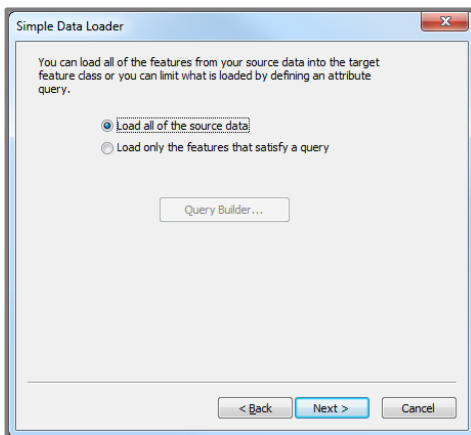


Figure 12.

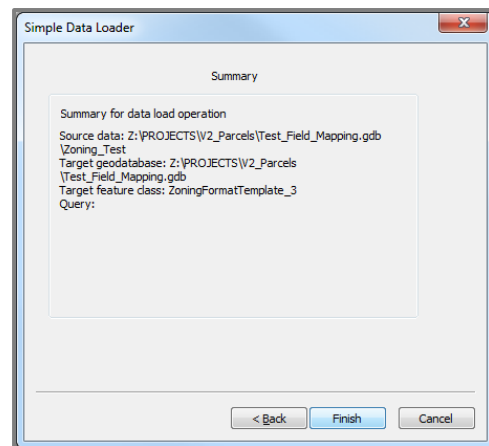


Figure 13.

4 Verify results

After the wizard has completed the mappings, check the output feature class's attribute table to confirm the mappings made are correct.

Troubleshooting

Who can I contact for help?

David Vogel, State Cartographer's Office, 608-890-3793, djvogel2@wisc.edu

