

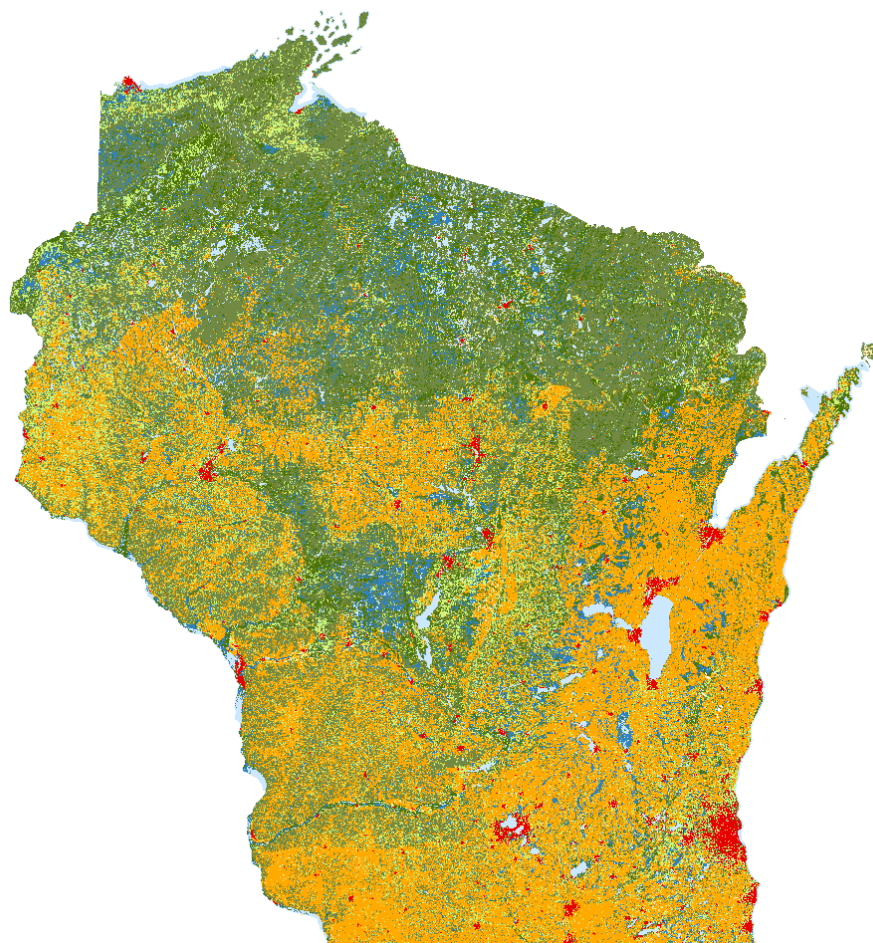


**Wisconsin
State Cartographer's Office**



WISCONSIN
UNIVERSITY OF WISCONSIN-MADISON

Wiscland-2: Wisconsin Land Cover Map Update



Jo Horton
UW-Madison

Carly Mertes
UW-Madison



Overview

- Quick background and history
- Methodology
- Status and Preliminary Results
- Next Steps



Timeline

1999	Wiscland 1 dataset release
2006	Meetings between UW and DNR, unsuccessful grant proposals
2012	Deer Trustee Report
2013	Act 20 budget authorizations to DNR
May 2014	Official Wiscland 2 project start
June 2016	Project completion and delivery



**Wisconsin
State Cartographer's Office**



Who's Involved

Department of Natural Resources

Represent stakeholders

Define deliverables

University of Wisconsin

Project management, Outreach (SCO)

Image processing (Project Team)

Science Advisory Committee

Review and advise methods



What will this dataset look like?

- Statewide, 30m coverage
- 2 acre minimum mapping unit
- 4-tier hierarchical classification
 - 8 broad cover types
 - 47 land cover classes at most detailed level
- Most classes are forest, wetland, and grassland subtypes

FOREST
Coniferous
Fir Spruce (FS)
Jack Pine (PJ)
Red Pine (PR)
White Pine (PW)
Hemlock Hardwoods (H)
Broad-leaved Deciduous
Aspen (A)
Paper Birch (BW)
Red Maple (MR)
Oak (O)
<i>N. Pin Oak, Black Oak</i>
<i>Red Oak</i>
<i>White Oak/Burr Oak</i>
Central Hardwoods (CH)
<i>Walnut</i>
Northern Hardwoods (NH)
<i>Sugar Maple</i>
Mixed Deciduous/Coniferous



How are we doing this?

- Landsat data 2009-2014 and ancillary datasets
- Training / validation pulled from existing datasets wherever possible
- Supplement sample data with field-collection
- Top-down classification with machine learning algorithm
- Post-classification segmentation



Wisconsin State Cartographer's Office



What have we done so far?

✓ *Data Collection*

- 100+ Landsat images per scene, across all seasons
- Topographic, soil information
- Vegetation Indices
- Field samples from 21 data sources
 - DNR Projects
 - Forest inventories



Wisconsin State Cartographer's Office



What have we done so far?

✓ *Compile sample database*

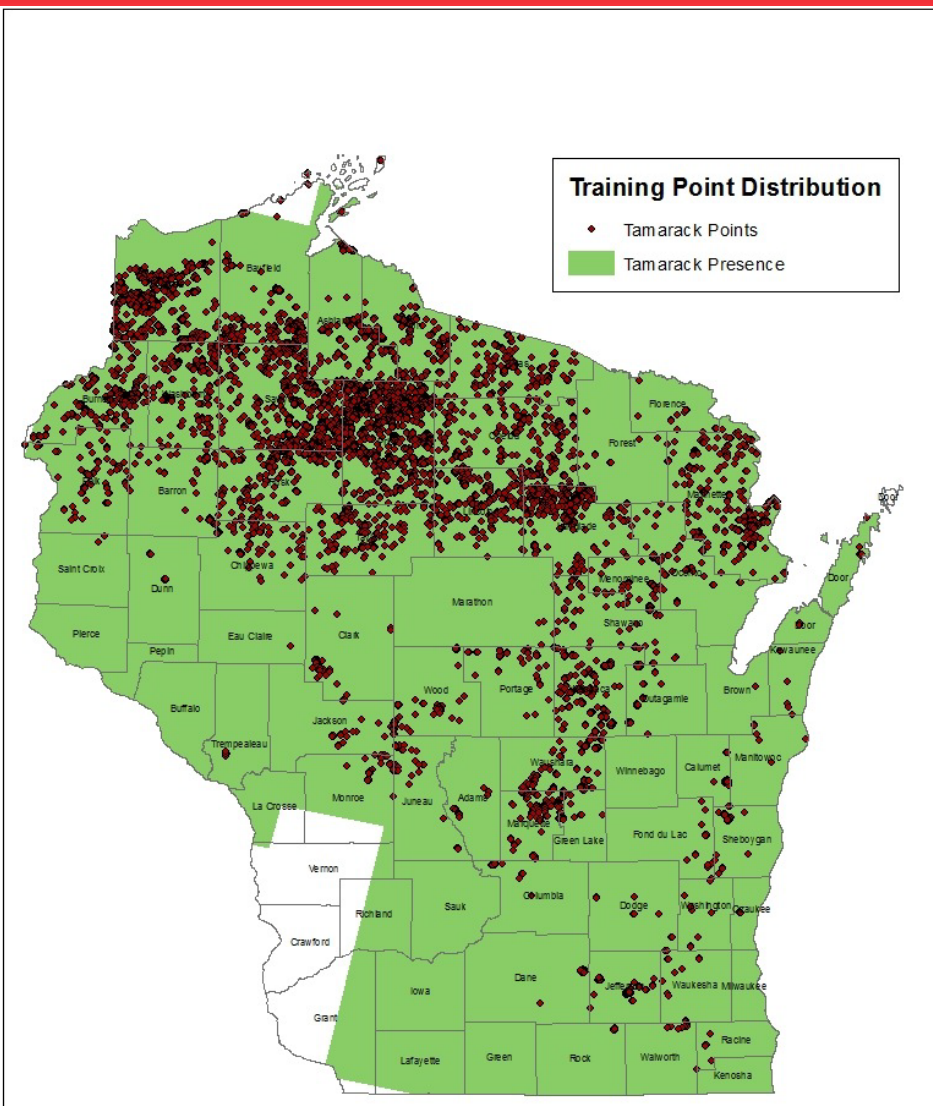
- Synthesize training/validation samples from existing sources of field samples
 - QA / subsetting
 - Crosswalking
 - Sampling
- Almost 1 million samples harvested from existing datasets
 - But redundancy



Wisconsin State Cartographer's Office



WISCONSIN
UNIVERSITY OF WISCONSIN-MADISON

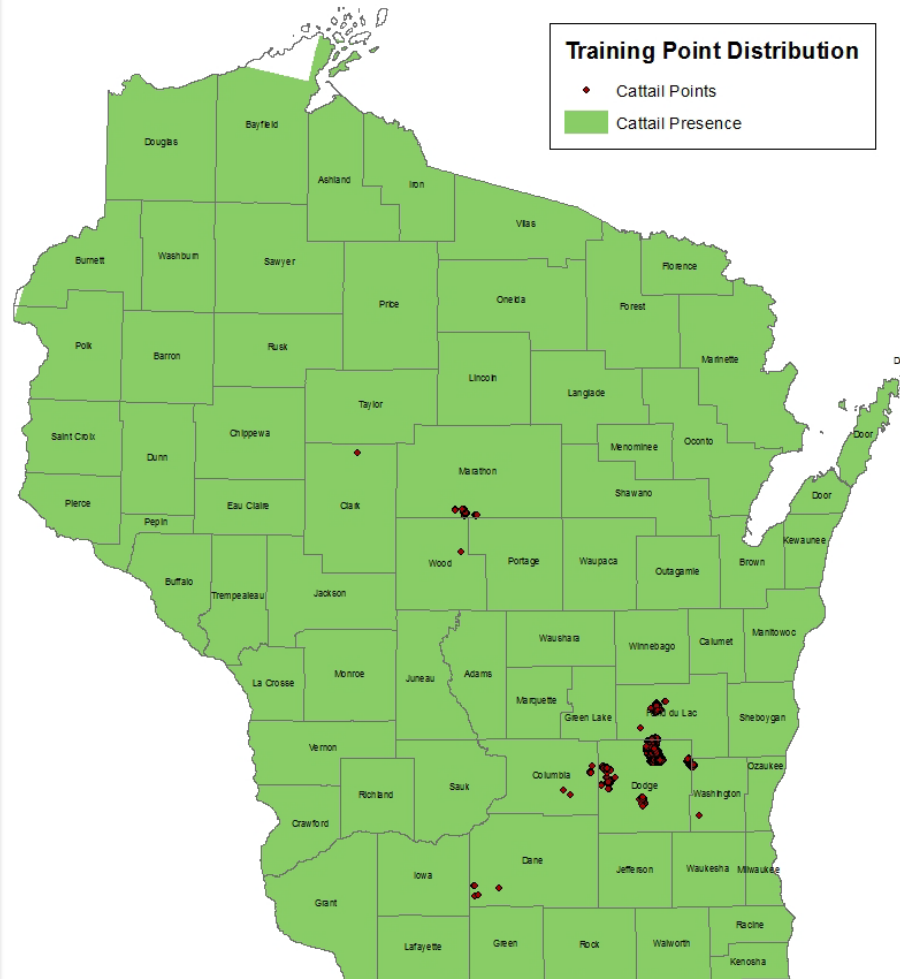




Wisconsin State Cartographer's Office



WISCONSIN
UNIVERSITY OF WISCONSIN-MADISON

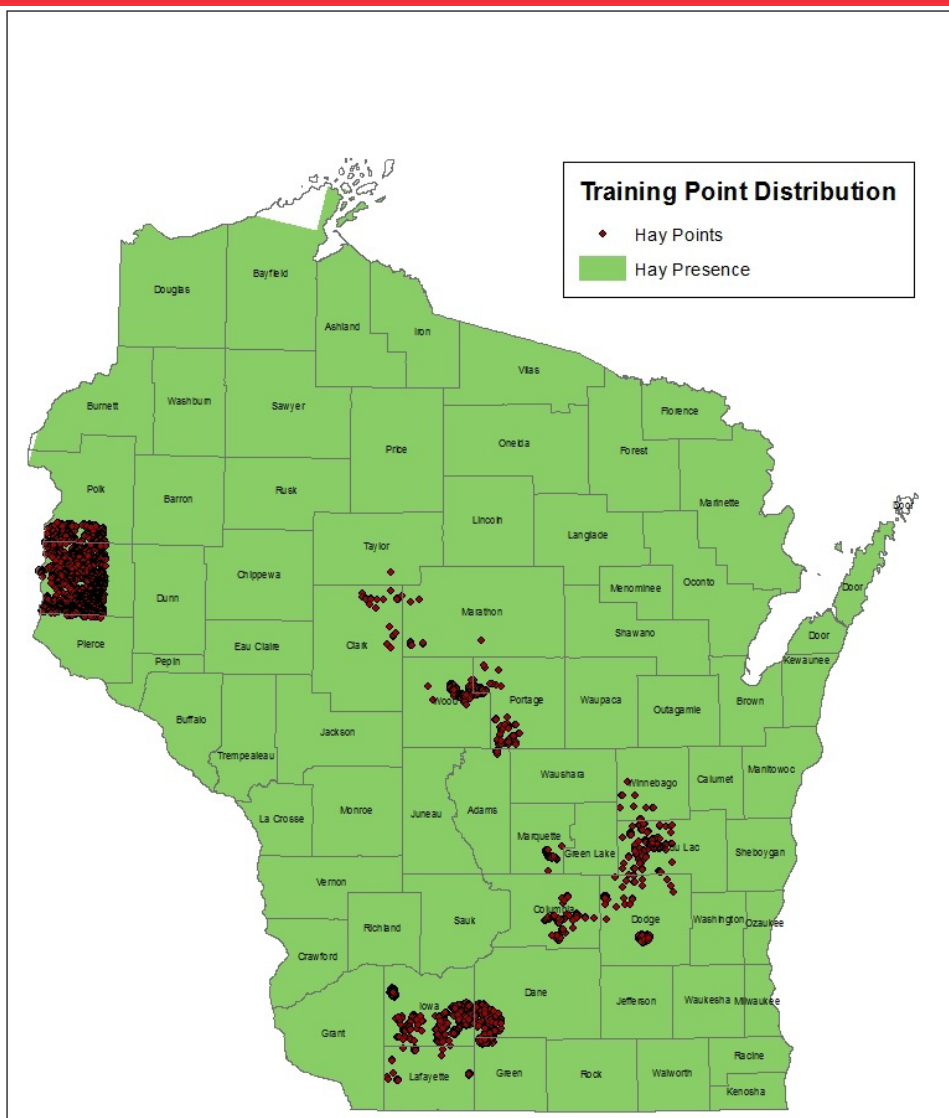




Wisconsin State Cartographer's Office



WISCONSIN
UNIVERSITY OF WISCONSIN-MADISON





Wisconsin State Cartographer's Office



What have we done so far?

✓ *Assess field work needs*

- Target at least 125 points / class for each footprint within the species' range
 - All footprints require some additional field collection
 - Collection will happen by county:
50-600 points needed per county



Wisconsin State Cartographer's Office

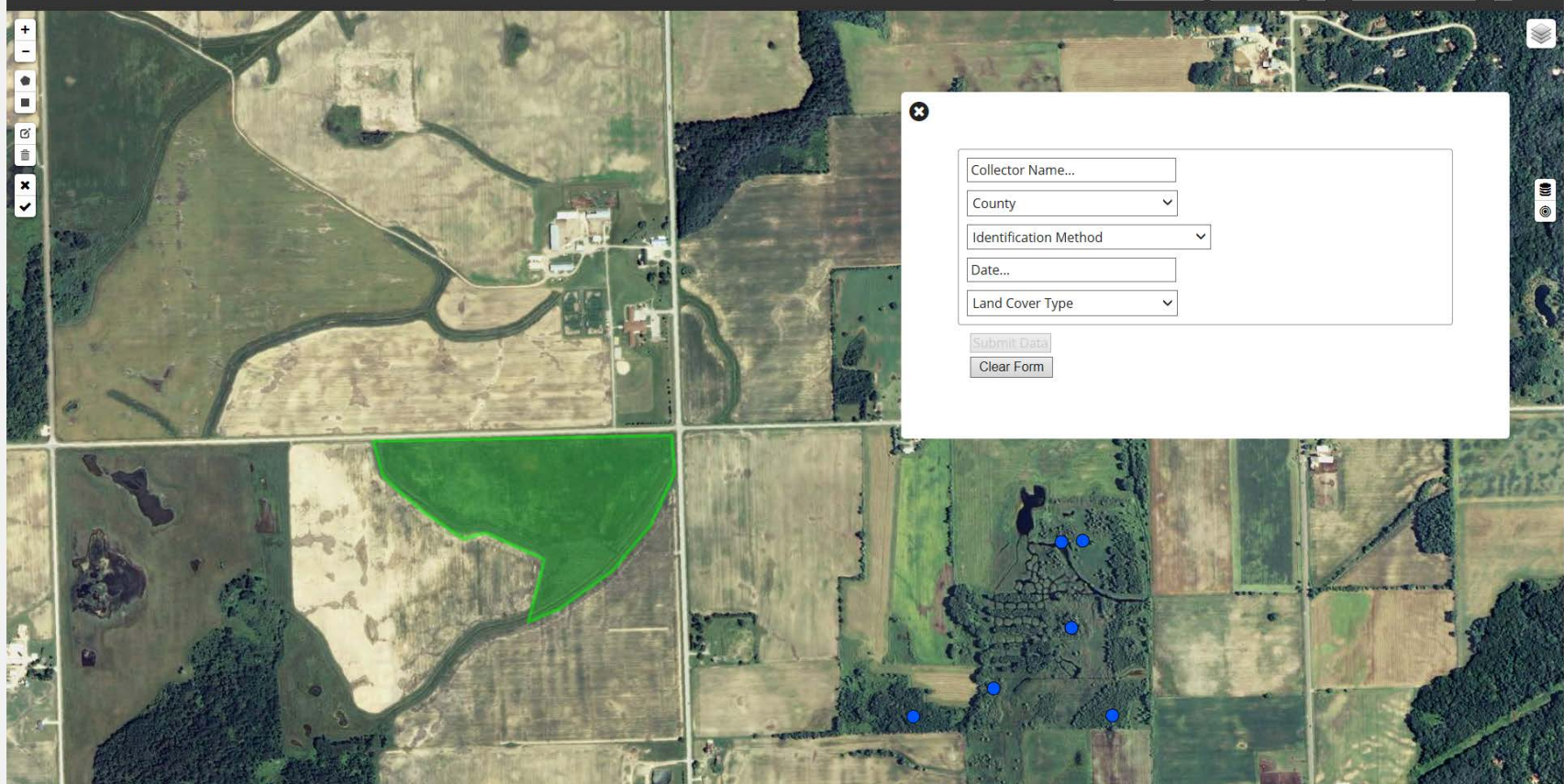


What have we done so far?

✓ *Develop field reporting tool*

LAND COVER FIELD REPORTER

SEARCH FOR LAT/LON:



Collector Name...

County

Identification Method

Date...

Land Cover Type

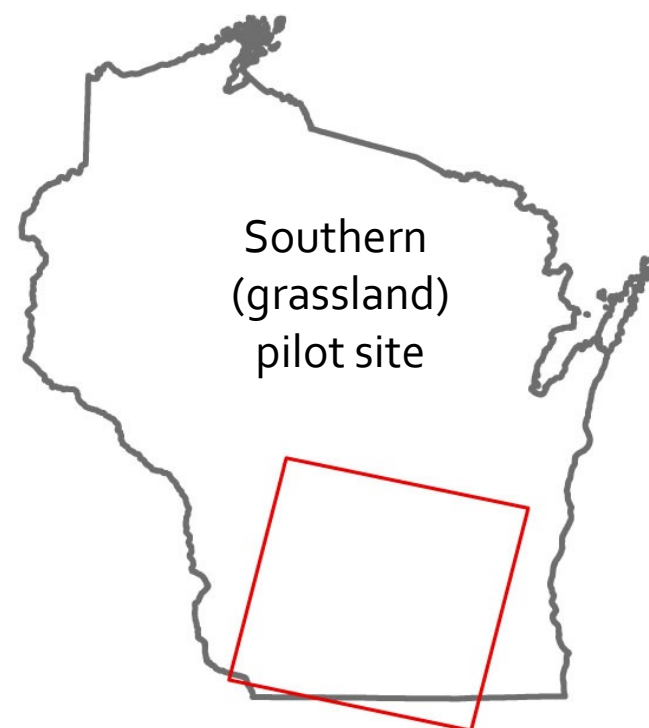
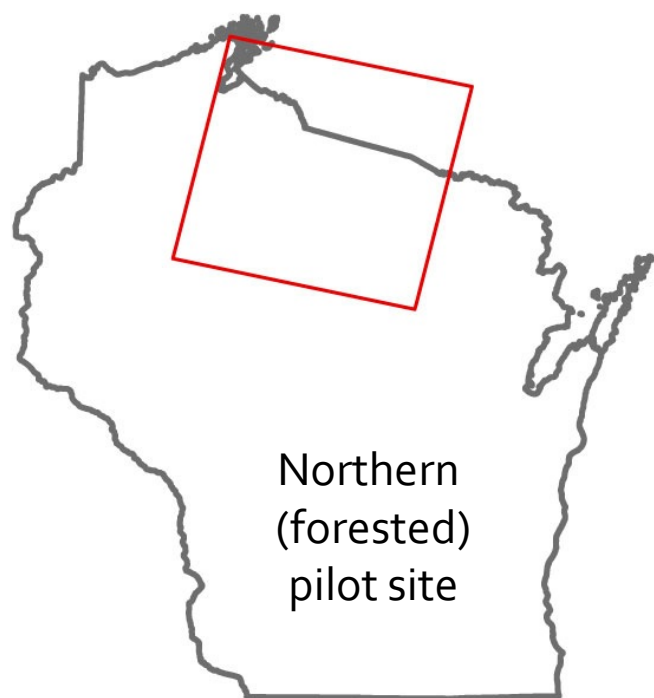


Wisconsin State Cartographer's Office



What have we done so far?

✓ *Conduct pilot study*



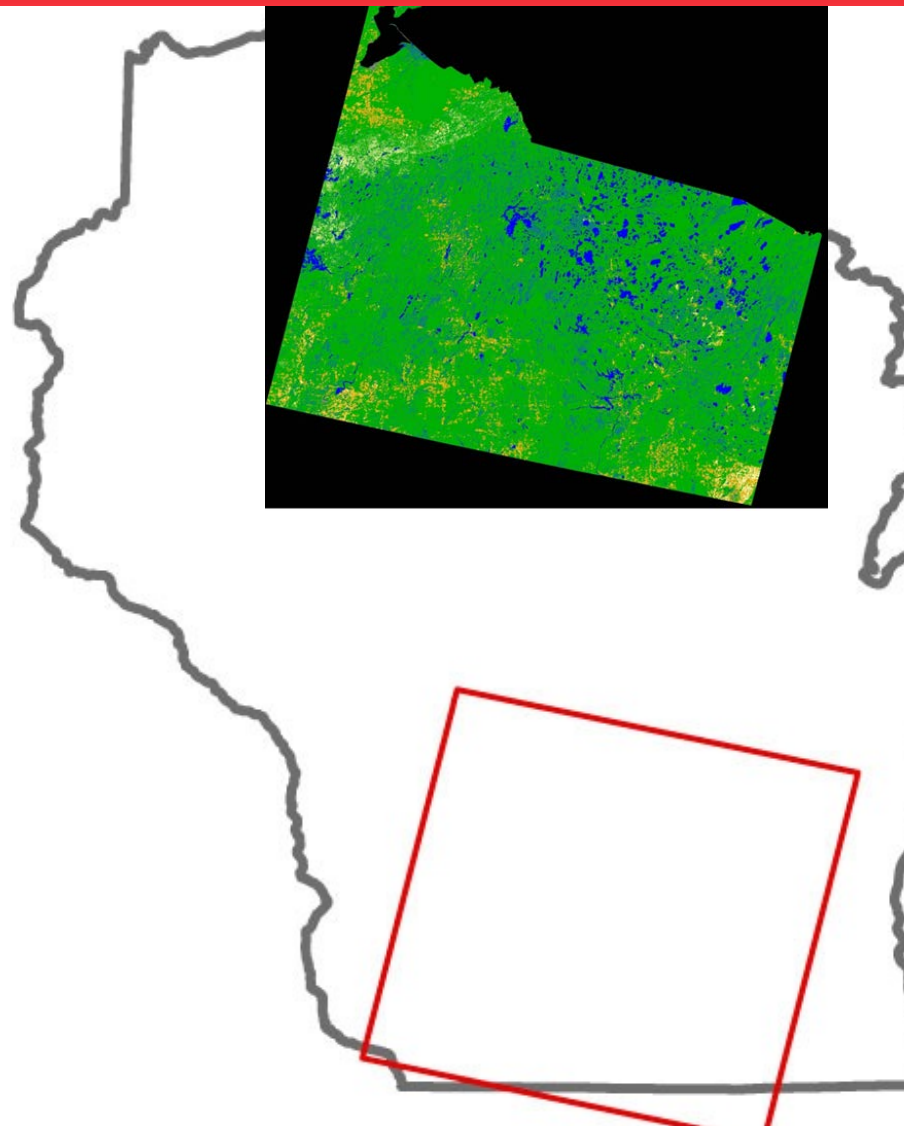


Wisconsin State Cartographer's Office



Pilot Study Results

- Imbalance in samples database (classes, distribution)
- Higher accuracy in northern (forested) site
 - Forestry data
 - Fewer categories
 - Uniformity of landscape





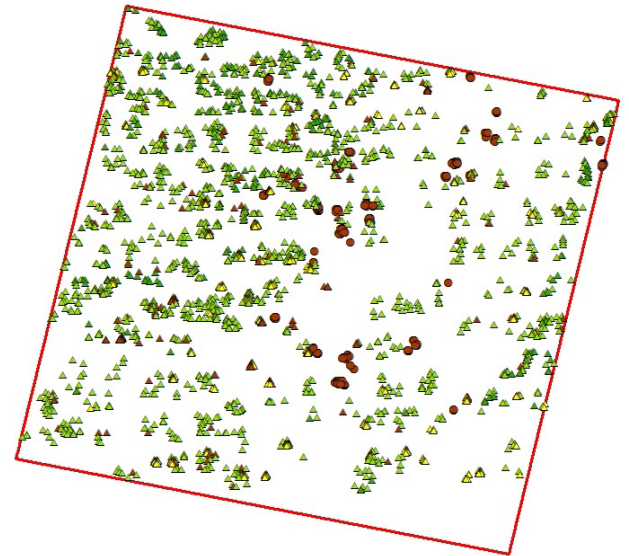
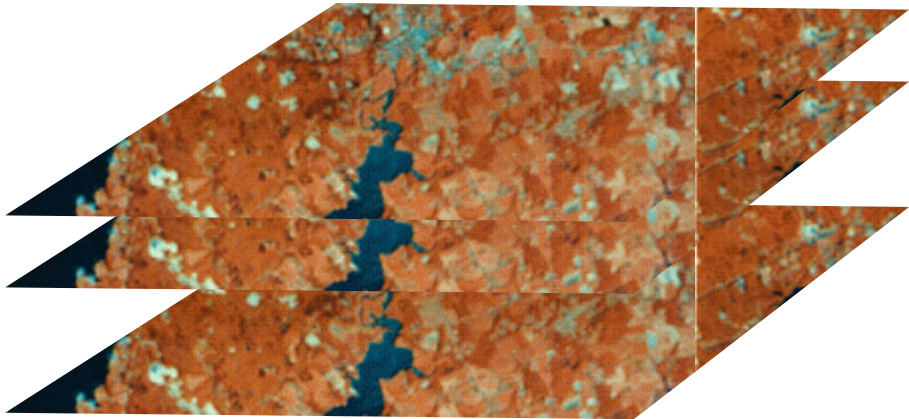
Wisconsin State Cartographer's Office



What have we done so far?

✓ *Develop tools*

- Developed image preprocessing, data extraction, cross-validation routines





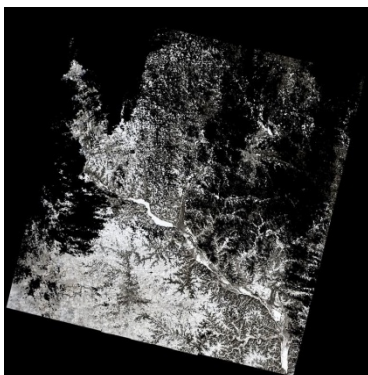
Wisconsin State Cartographer's Office



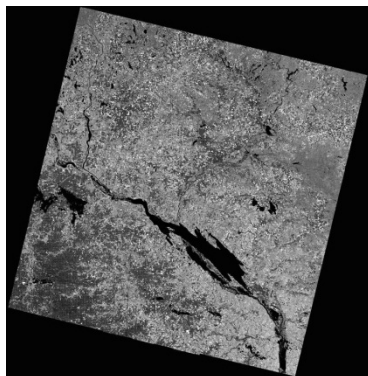
What's next?

☐ *Feature Selection*

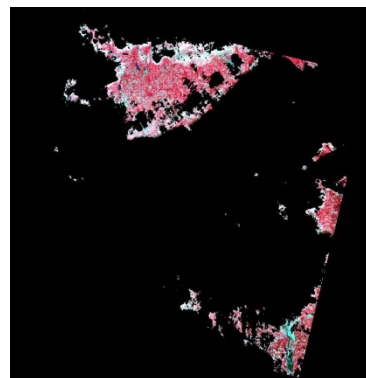
- > 100GB spectral data acquired for each footprint



Time of year?



Vegetation Indices?



Missing data?



Soils, topography?



Wisconsin State Cartographer's Office



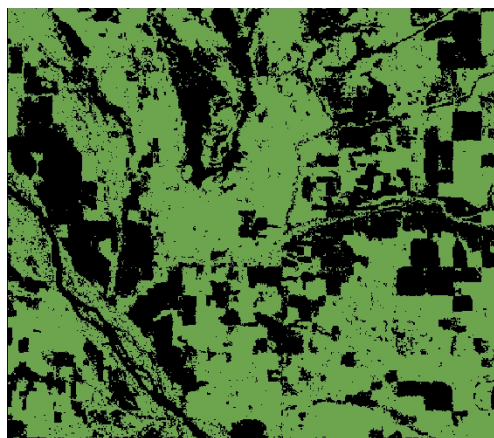
What's next?

☐ *Begin classification runs*

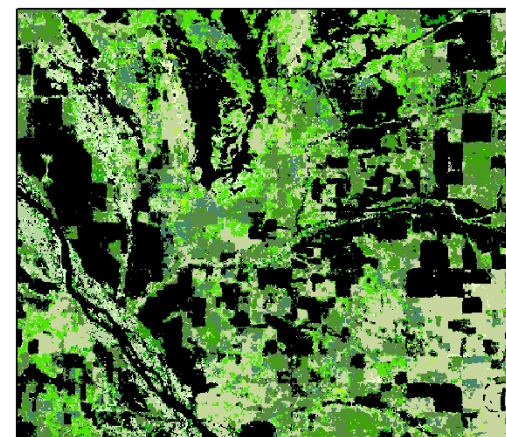
- Statewide Level 1 classifications
- Footprints with most sample data



Statewide Level 1
(all classes)



Level 1 Forest



Level 4 Forest



Wisconsin State Cartographer's Office

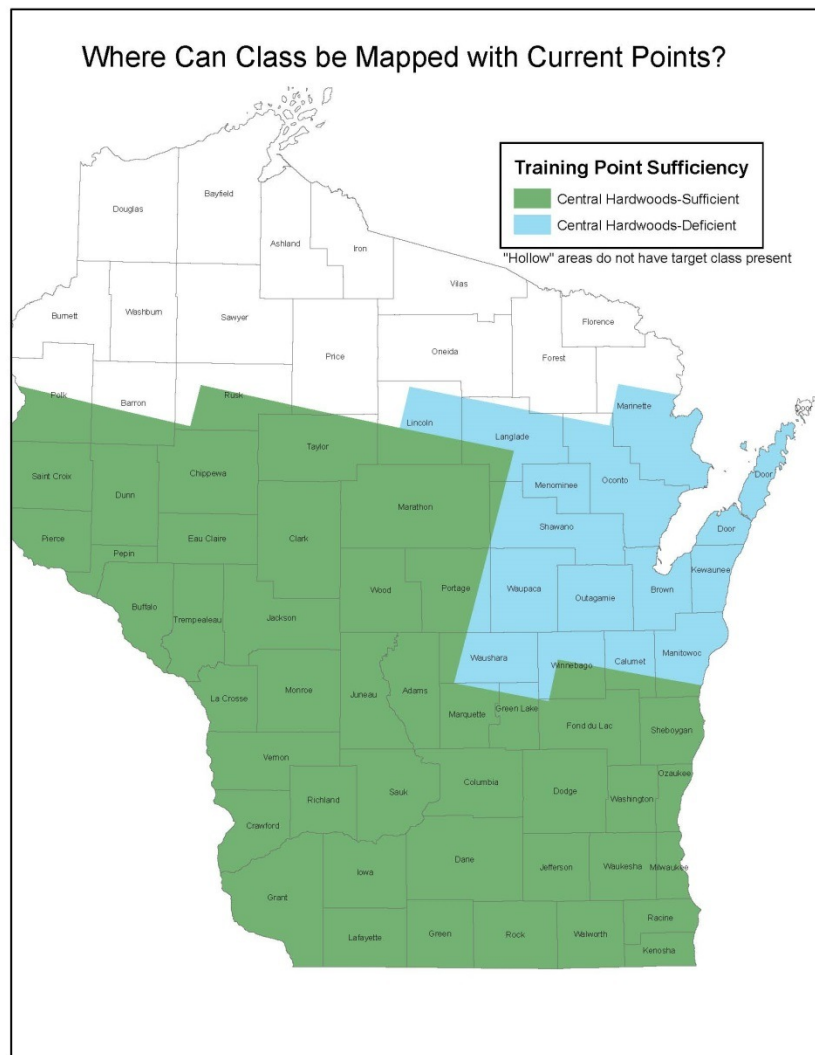


What's next?

☐ *Field collection*

- DNR-lead collection effort, guided by UW field request

- Starting soon and ramping up through the summer



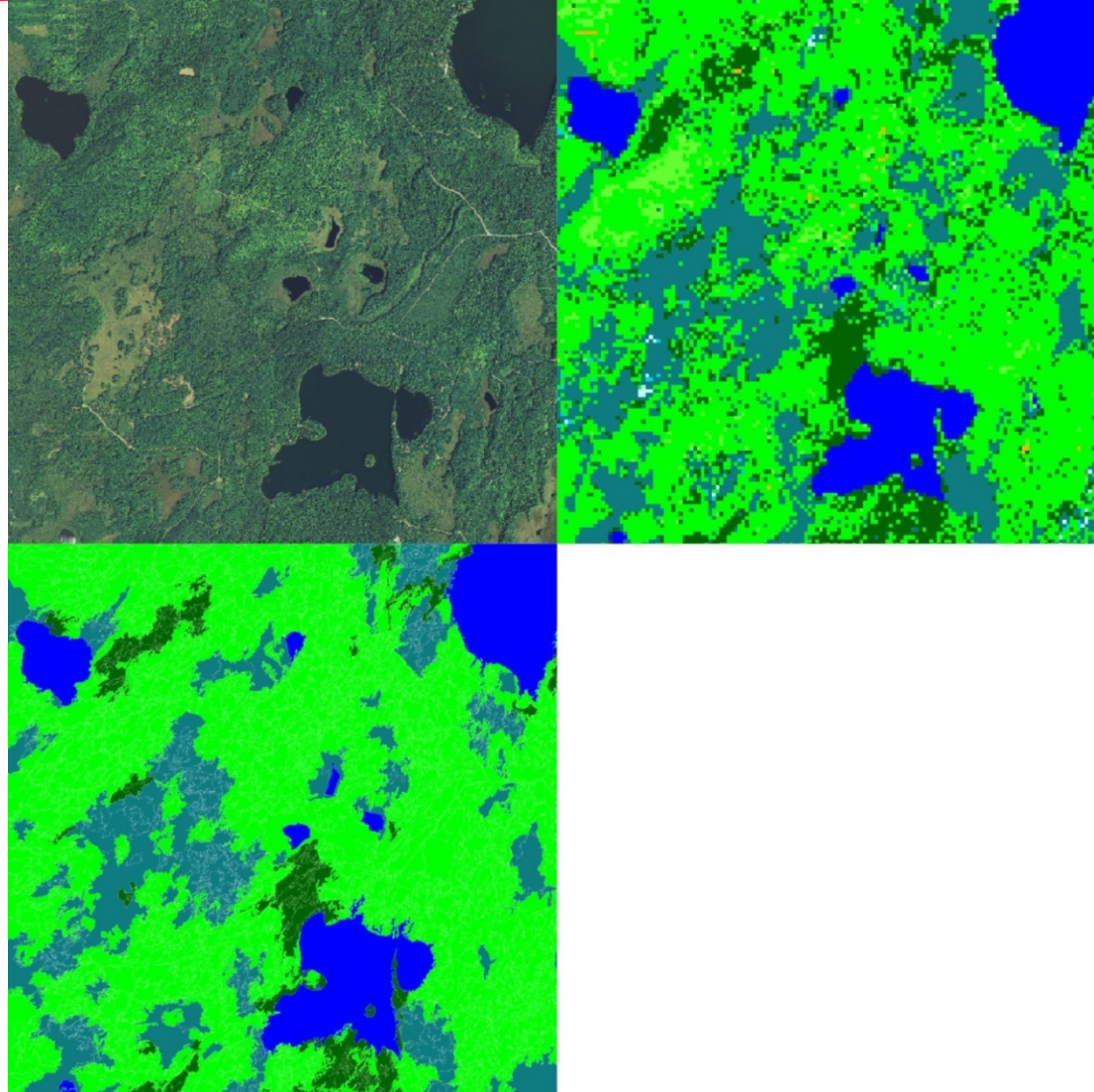


Wisconsin State Cartographer's Office



What's next?

- ☐ *Finalize processing workflow*
- Develop routines for map generation and segmentation
- Center for High Throughput Computing (CHTC)





Wisconsin State Cartographer's Office



What's next?

☐ *Delivery*

- Land cover database
 - Single file with Level 1-4 classifications
 - Metadata
 - Users' guide
 - Final report
- June 30, 2016 project completion



Further Details

- SCO Project Website
 - <http://www.sco.wisc.edu/projects/landcover.html>
 - Pilot report, project updates, staff bios, mailing list sign-up, etc.
- Deer Trustee Report
 - <http://dnr.wi.gov/topic/wildlifehabitat/documents/trusteeereport.PDF>
- The Wiscland-2 project is a cooperative effort between UW-Madison and the Wisconsin DNR with funding from the Federal Aid in Wildlife Restoration Program, grant# W-160-P-25



Wisconsin State Cartographer's Office



UW Contacts

Howard Veregin
Principal Investigator
Wisconsin SCO
veregin@wisc.edu

Carly Mertes
Remote Sensing Analyst
Wisconsin SCO
cmertes@wisc.edu

Jim Lacy
Project Coordinator
Wisconsin SCO
lacy@wisc.edu

Jo Horton
Remote Sensing Analyst
Wisconsin SCO
horton1@wisc.edu

Mutlu Ozdogan
Science Team Leader, Co-PI
UW Forest and Wildlife Ecology
ozdogan@wisc.edu

Matthew Bougie
Remote Sensing Technician
Wisconsin SCO
mbougie@wisc.edu



Wisconsin State Cartographer's Office



DNR Guidance Team

Bob Nack
Wildlife-Project Sponsor

Courtney Klaus
Forestry Division

John Laedlein
Bureau of Technology Services

Janel Pike
Forestry Division

Lisa Morrison
Bureau of Technology Services

Tom Simmons
Water Division

Jeff Walters
Lands Division



Wisconsin State Cartographer's Office



Science Advisory Committee

Jonathon Chipman
Dartmouth College

Tom Lillesand
UW Emeritus

Sam Batzli
UW WisconsinView

Andy Fayram
Wisconsin DNR

Don Waller
UW-Madison

Tim Van Deelen
UW-Madison

Brian Huberty
USFWS

Chris Lowe
Land Info Worldwide

Cyril Wilson
UW-Eau Claire

Joe Knight
University of Minnesota

David Mladenoff
UW-Madison

Changshan Wu
UW-Milwaukee

Phil Townsend
UW-Madison