

PUBLICATIONS OF INTEREST

LAND USE PLANNING IN WISCONSIN-THE BIG PICTURE

In this 32-page booklet, written by the Land Use Committee of the Wisconsin Chapter of the Soil Conservation Society of America, 7 categories of land use are identified and discussed in the context of 5 physiographic regions of the state. Although the physical setting is Wisconsin, the principles and policy considerations presented would be useful elsewhere as well. The price of this 1978 booklet is \$1.50 for a single copy or \$1.00 per copy for 2 or more. Address your order to Wisconsin Chapter-SCSA, Room 130, 1815 University Ave., Madison, WI 53706.

PROGRAMS AND ACTIVITIES: GEOLOGICAL AND NATURAL HISTORY SURVEY 1978

The Wisconsin Geological Survey has issued its first biennial report in 33 years. The well illustrated 52-page report covers Survey administration and organization, program areas, and program support. Feature articles on Precambrian geology, coastal hazards, ground water, and mineral potential highlight this very informative publication. Copies are available free on request to the Wisconsin Geological Survey, 1815 University Ave., Madison, WI 53706.

CARTOGRAPHIC RECORDS OF THE NATIONAL PLANNING BOARD

Special List 41 is a new National Archives publication which describes statistical and special purpose maps compiled by the Federal Government during the 1930's. These maps were produced to depict America's natural and economic resources during the Depression. Several maps relating to Wisconsin are included. Special List 41 can be ordered, free of charge, from Mr. R.E. Ehrenberg, Director, Center for Cartographic and Architectural Archives (NNTS), National Archives and Record Service, Washington, D.C. 20408.

EPHEMERIS OF THE SUN, POLARIS, AND OTHER SELECTED STARS, WITH COMPANION DATA AND TABLES, FOR THE YEAR 1979

The positions of the sun, polaris, and other stars are shown at regular intervals of time in this 30-page book. Price \$1.70 from the Superintendent of Documents, U.S. Government Printing Office, Washington, D.C. 20402. Stock Number 024-011-00090-9.

PROCEEDINGS OF THE SECOND INTERNATIONAL SYMPOSIUM ON PROBLEMS RELATED TO THE REDEFINITION OF NORTH AMERICAN GEODETIC NETWORKS

These proceedings are an interim study of the progress at midpoint in the 8-year project to replace the North American Datum of 1929 with an improved Datum of 1983. Many of the papers have not been published previously. The 650-page publication is profusely illustrated with hundreds of figures and photographs, making it enjoyable reading for surveyors, geodesists, and other physical scientists. Order from the Superintendent of Documents, U.S. Government Printing Office, Washington, D.C. 20402. Stock Number 003-017-00426-1, price \$7.75 per copy.

LAND INFORMATION SYSTEMS, AN ANNOTATED BIBLIOGRAPHY

The North American Institute for Modernization of Land Data Systems (MOLDS) has published an extensive bibliography on land information systems. This bibliography contains over 1,400 entries covering all land-related subjects. It was compiled by D. David Moyer and can be purchased from MOLDS for \$10.00. Checks made payable to MOLDS should be sent to MOLDS, c/o American Congress on Surveying and Mapping, 210 Little Falls St., Falls Church, VA 22046.

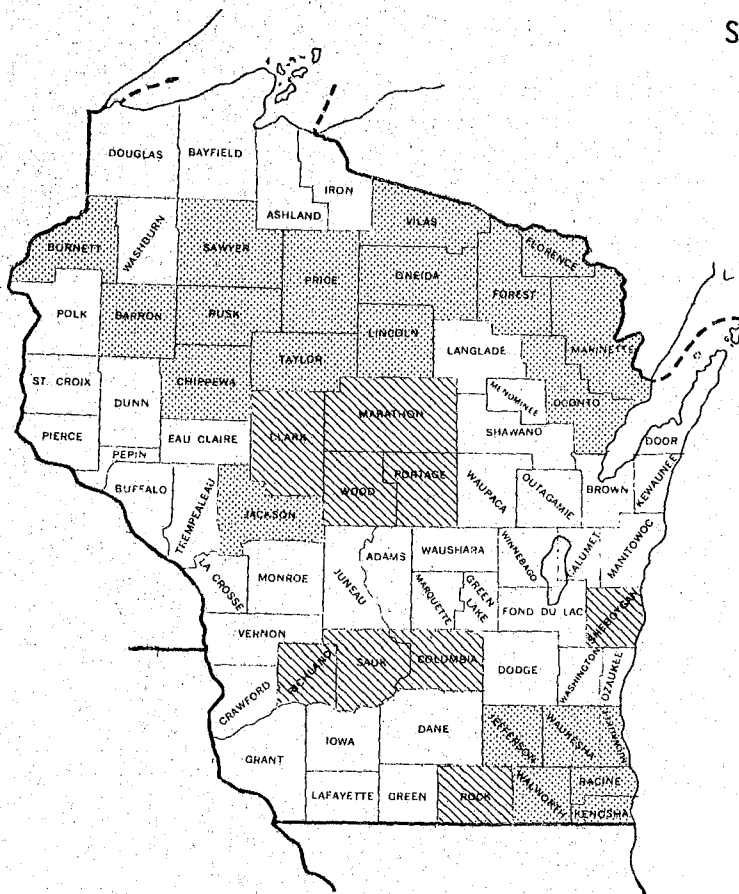
UPDATE: U. S. D. A. PHOTOGRAPHIC ACQUISITIONS

The programs of the U.S.D.A. Agricultural Stabilization and Conservation Service (A.S.C.S.) and the Soil Conservation Service (S.C.S.) for the acquisition of black-and-white aerial photography have undergone recent change. The following information is summarized from the June 6, 1979 report:

COUNTY PHOTOGRAPHY ACQUIRED (A = A.S.C.S. S = S.C.S.)



COUNTY	SCALE	DATE ACCEPTED	COUNTY	SCALE	DATE ACCEPTED
A Clark	1:40,000	3/22/79	A Rock	1:40,000	2/15/79
A Columbia	1:40,000	2/15/79	A Sauk	1:40,000	2/15/79
A Marathon	1:40,000	2/14/79	A Sheboygan	1:40,000	1/08/79
A Portage	1:40,000	2/14/79	A Wood	1:40,000	2/14/79
A Richland	1:40,000	1/08/79			

SCHEDULED THROUGH 1980 FLYING SEASON (A = A.S.C.S. S = S.C.S.)



COUNTY SCALE

A Barron	1:40,000
S Burnett	1:48,000
A Chippewa	1:40,000
A Florence	1:40,000
A Forest	1:40,000
S Jackson	1:48,000
A Jefferson	1:40,000
A Kenosha	1:40,000
S Lincoln	1:48,000
A Marinette*	1:40,000
S Marinette*	1:48,000
A Milwaukee	1:40,000
S Oconto	1:38,000
A Oneida	1:40,000
S Price	1:48,000
A Racine	1:40,000
S Rusk	1:48,000
S Sawyer	1:48,000
S Taylor	1:48,000
A Vilas	1:40,000
A Walworth	1:40,000
A Waukesha	1:40,000

 Accepted
 Planned

*This office has no explanation as to why two elements of the U.S.D.A. have scheduled the same county at slightly different aerial photography scales during the same flying season.



The Land Resources Analysis Program of the Wisconsin Geological Survey and the Dept. of Administration, Office of State Planning and Energy produced a standardized series of 10 maps at a scale of 1:500,000. These maps provide local, regional and state decision-makers with an added ability to visualize individual land use and resource issues in a broad, statewide framework. The maps also promote a greater public understanding of land resource conflicts and demonstrate the need for improved land use information. Any official or private citizen concerned with Wisconsin's physical environment should consider purchasing one or more of the maps in the LANDRAP series. A 10% discount may be applied when the entire series is ordered (with or without the descriptive booklet for map #10).

1. Generalized soil limitations for use of septic systems. Compiled by F.D. Hole, 1975. Two colors. \$1.50.
2. Generalized soil limitations to construction activities. Compiled by F.D. Hole, 1975. Two colors. \$1.50.
3. Generalized soil erosion hazards. Compiled by F.D. Hole, 1975. Two colors. \$1.50.
4. Major public open space. Compiled by Office of State Planning and Energy, 1974. Four colors. \$1.50.
5. Lands of special public policy designation. Compiled by Office of State Planning and Energy, 1974. Four colors. \$1.50.
6. Major areas of potential flood hazard and steep slope. Compiled by B.E. Frazier, 1975. Two colors. \$1.50.
7. Generalized land cover interpreted from ERTS-1 satellite imagery. Compiled by B.E. Frazier and R.W. Kiefer, 1974. Two colors. \$1.50.
8. Generalized soil productivity for field crops. Compiled by F.D. Hole, 1975. Two colors. \$1.50.
9. Generalized soil productivity for canning crops. Compiled by F.D. Hole, 1975. Two colors. \$1.50.
10. Glacial deposits of Wisconsin: sand and gravel resource potential. Compiled by D.W. Hadley & J.H. Pelham, 1976. Four colors. \$3.50. Accompanying descriptive booklet \$1.50.

Any or all of the above maps may be purchased from the Wisconsin Geological Survey, Map Sales, 1815 University Ave., Madison, WI 53706 (608)263-7389. Payment must accompany order. The 10% discount applies only if all maps are ordered (with or without the booklet for map #10).

NEW MAPS

PEATLANDS: MINNESOTA, WISCONSIN, MICHIGAN: A GENERALIZED PEAT MAP COMPILED FROM SOILS MAPS OF MINNESOTA, WISCONSIN & MICHIGAN. Compiled by Thomas J. Malterer, design by B. Conway. 1978. Scale ca. 1:180,000 with text. No charge from the Minnesota Dept. of Natural Resources, Div. of Minerals, 345 Centennial Office Building, St. Paul, MN 55155.

VISITER'S GUIDE TO WISCONSIN'S STATE PARKS, FORESTS AND OTHER RECREATION LANDS. Wisconsin Dept. of Natural Resources. 1978. Scale not given. Includes tourist information. Free from the Wis. Division of Tourism, 123 West Washington Ave., Madison, WI 53702 (608) 266-2161.

TRAVELER'S GUIDE TO HISTORIC WISCONSIN WITH A LISTING OF WISCONSIN STATE PARKS. Wisconsin State Historical Society. 1976. Scale not given. Includes text and index to official historical markers. Free from the Wis. Division of Tourism, 123 West Washington Ave., Madison, WI 53702 (608) 266-2161.

WATER RESOURCES INVESTIGATIONS REPORTS

(prepared by the U. S. Geological Survey in cooperation with the Southeastern Wisconsin Regional Planning Commission; limited distribution by the U.S.G.S., Water Resources Division, 1815 University Ave., Room 200, Madison, WI 53706)

Water-table map of KENOSHA County, Wis. by M.G. Sherrill and J.J. Schiller. U.S. Geological Survey WRI 79-39. Scale 1:100,000. 1978.

Water-table map of MILWAUKEE County, Wis. by M.G. Sherrill and J.J. Schiller. U.S. Geological Survey WRI 79-40. Scale 1:100,000. 1978.

Water-table map of RACINE County, Wis. by M.G. Sherrill and J.J. Schiller. U.S. Geological Survey WRI 79-41. Scale 1:100,000. 1978.

Water-table map of WALWORTH County, Wis. by M.G. Sherrill and J.R. Erikson. U.S. Geological Survey WRI 79-42. Scale 1:100,000. 1978.*

Water-table map of WAUKESHA County, Wis. by J.B. Gonthier. U.S. Geological Survey WRI 79-43. Scale 1:100,000. 1978.*

* *also in cooperation with the Wisconsin Geological Survey*

DOOR COUNTY ROAD MAP. 1979. Scale ca. 1:140,000. 4-color with city insets. \$2.00 from Milwaukee Map Service, Inc., 4519 W. North Ave., Milwaukee, WI 53208 (414) 445-7361.

DANE COUNTY, A GUIDE TO THE RURAL LANDSCAPE. Prepared for the Dane County Cultural Affairs Comm. by Landscape Research, Ltd. 1978. Scale ca. 1:250,000 with text. Free from the Dane County Cultural Affairs Commission, 210 Monona Ave., Madison, WI 53709 (608) 266-5915.

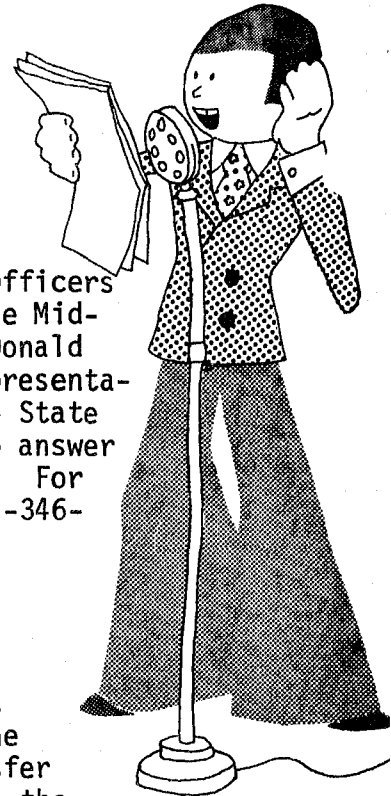
GLACIAL GEOLOGY OF DANE COUNTY, WISCONSIN by D.M. Mickelson and M.C. McCartney. 1979. Scale 1:100,000. This multi-colored map shows the distribution of glacial and some post-glacial landforms and associated materials. Available for \$2.00 from Map Sales, Wisconsin Geological Survey, 1815 University Ave., Madison, WI 53706 (608) 263-7389.

LAKE WINNEBAGO RECREATIONAL MAP. Clarkson Map Company. No date given. Scale ca. 1:30,000. 4-color with extensive tourist facilities shown. \$1.00 from the Stockbridge Chamber of Commerce, Stockbridge, WI 53088.

COMING EVENTS

WISCONSIN REAL PROPERTY DESCRIPTION OFFICERS

The annual meeting of the Wisconsin Real Property Description Officers (tax listers) will be held September 19, 20, and 21, 1979 at the Midway Motor Lodge in Wausau. The principal speaker will be Dr. Donald Weindauf, Geography Professor from South Dakota, with a slide presentation on Landsat satellite photography. A representative of the State Cartographer's Office will be available on Thursday the 20th to answer mapping and aerial photography questions relating to Wisconsin. For additional information contact either John Thomas (Portage) 715-346-2305 or Katy Hollman (Marathon) 715-842-0471, ext. 270.



WESTERN GREAT LAKES REGION, AMERICAN SOCIETY OF PHOTOGRAMMETRY

The September 14th technical meeting of the Western Great Lakes Region, A.S.P. will feature Mr. William Roselle, Director of the U.W.-Milwaukee Library, speaking on the recent successful transfer of the American Geographical Society's tremendous collection to the U.W.-Milwaukee Library. Also participating in the evening's events will be the Wisconsin Map Society and the State Cartographer's Office. The program will begin with cocktails at 6:30 p.m. and dinner at 7:00. Mr. Roselle's portion of the program will begin at 8:30 after a short business meeting. The meeting will be held at Nino's Steak Roundup East, 4214 E. Washington Ave., Madison. Reservations and additional information may be obtained from John Haverberg, 4797 Delmara Road, Middleton, WI 53562 (608) 266-0112.

LEAGUE OF WISCONSIN MUNICIPALITIES

The 81st annual conference will be held October 17, 18 & 19 at the Concourse Hotel in Madison. Contact Bob Tevik, League of Wisconsin Municipalities, 122 West Washington Ave., Madison, WI 53703 (608) 266-9920 for additional information.

AMERICAN SOCIETY OF PHOTOGRAMMETRY/AMERICAN CONGRESS ON SURVEYING AND MAPPING

"Observing and Measuring the Planet Earth" is the theme of the 1979 Fall Convention and Exhibit of the American Society of Photogrammetry and the American Congress on Surveying and Mapping. It is being held in Sioux Falls, SD on Sept. 17-21 with the cooperation of the EROS Data Center, U.S.G.S. and the Remote Sensing Institute of South Dakota State University. For more information, write to: ASP-ACSM Fall Convention, P.O. Box 1837, Sioux Falls, SD 57101.

AUTO-CARTO IV

"Cartography and Computing Applications in Health and Environment" is being sponsored by the A.C.S.M. and A.S.P. in cooperation with the National Center for Health Statistics, the U.S. Defense Mapping Agency, and the National Cancer Institute, November 4-8 at the Sheraton Inn & International Conference Center, Reston, VA. For more information contact: James A. Smith, Conference Management Branch, NCHS, Room 2-12, Center Building, 3700 East West Highway, Hyattsville, MD 20782, (301) 436-7122.

★★ STATE AIR PHOTO ACQUISITION CONTINUES ★★

On July 18th the summer leaf-on season for the acquisition of aerial photography started and all three contractors were actively engaged in operations. With reasonably good flying weather this summer it appears that there will be no problem in completing coverage of the state. With 58% coverage acquired in 1978, the contractors are now retaking areas of poor quality and flying areas not taken.

The Department of Transportation reports that sales are good and the photography has been well received. A commercial contract was used over the winter to reproduce additional 1" = 400' film enlargements. Approximately 40% of last year's coverage is now available in that format. For additional information and areas of availability contact: Special Services, D.O.T., Hill Farms State Office Building, P.O. Box 7916, Madison, WI 53707 (608) 266-0076.

★ WISCONSIN SOCIETY OF LAND SURVEYORS ★★

The May issue of the American Congress of Surveying and Mapping Bulletin made a special note of the Congress's Affiliates who were early respondents to ACSM's request for a voluntary "fair share" contribution to help balance the budget of the organization. The Wisconsin Society of Land Surveyors was one of five affiliates nationwide whose immediate assistance was acknowledged. Our compliments to the Society in recognizing the need of the Congress.

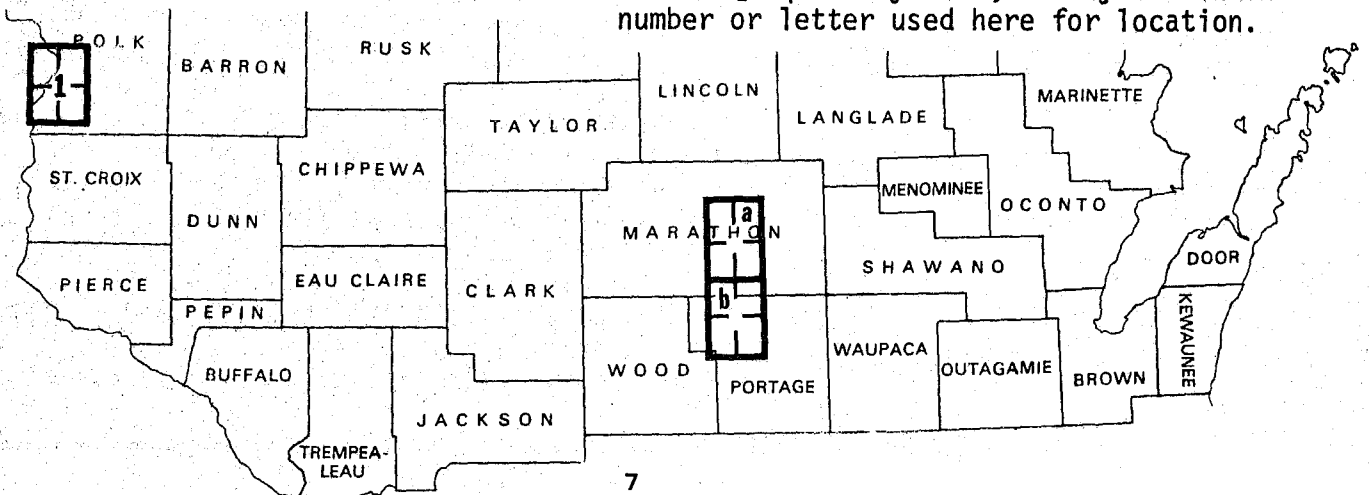
NEW PRODUCTION FROM U.S. GEOLOGICAL SURVEY

These newly published 7½' topographic quadrangle maps (1:24,000) are listed by their location on the superseded 15' topographic or planimetric map of the area. They are available from the Wisconsin Geological Survey, 1815 University Ave., Madison, WI 53706 (608)263-7389. Topographic quadrangles are \$1.50 each.

1 ST. CROIX DALLES 15' TOPO
 NE¼ None
 NW¼ None
 SW¼ Osceola '78
 SE¼ None

PHOTOREVISED 7½' TOPO QUADS
a Wausau East PR'76
b Dancy PR'76

NOTE: Order 7½' quads by name, NOT by the index number or letter used here for location.



CENSUS MAPS

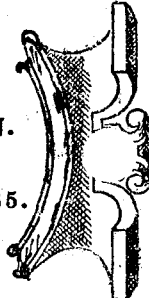
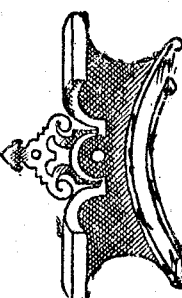


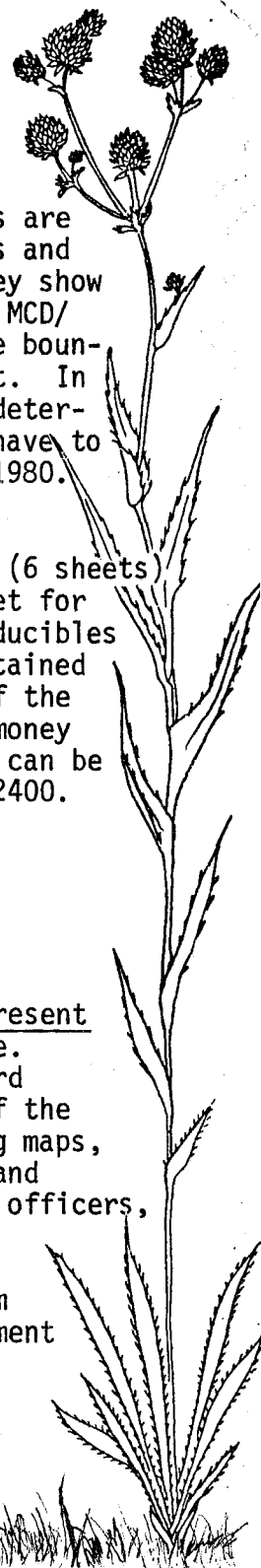
Copies of the node-numbered version of the Metropolitan Map Series sheets are now available for the related GBF/DIME Files. They are known as CUE maps and cover the portions of metropolitan areas included in GBF/DIME Files. They show boundaries for 1980 census tracts, blocks, census designated places, and MCD/CCD's. The municipal corporate limits depicted on the maps represent the boundaries coded by the local agency at the time of GBF/DIME File development. In most SMSA's this coding was done during 1976 or 1977. Users wishing to determine the corporate boundaries that will be used in the 1980 census will have to rely on the maps which will become available beginning in the summer of 1980.

Three Wisconsin cities are now available: GREEN BAY (8 sheets), KENOSHA (6 sheets) and MADISON (8 sheets). The cost of obtaining CUE maps is \$2.60 per sheet for a paper copy. Mylar reproducibles (\$5.50 per sheet) and cronaflex reproducibles (\$25.00 per sheet) are also available. Copies of the CUE maps can be obtained from the Customer Services Branch, Data User Services Division, Bureau of the Census, Washington, D.C. 20233. Prepayment is required, and checks or money orders should be made payable to "Commerce-Census". Further information can be obtained from Deloris Fentress of the Customer Services Branch (301)763-2400.

LAND RECORDS

The publication Land Records - The Cost to the Citizen to Maintain the Present Land Information Base - A Case Study of Wisconsin is once again available. Land records are defined as "those spatially-related documents that record governmental interest in the physical, legal and environmental aspects of the land - whether in, on, above or under the surface of the earth, including maps, plats, inventories, logs, microfilm, publications, field notes, reports and files". This report is of special interest to real property description officers, surveyors, assessors and any person who deals with land transactions.

Land Records - The Cost to the Citizen is available for 85¢ per copy from Document Sales, 202 S. Thornton, Madison, WI 53702 (608) 266-3358. Payment should accompany an order although governmental units can be invoiced.



THE WISCONSIN MAPPING BULLETIN IS DISTRIBUTED FREE OF CHARGE ON REQUEST. ARTICLES MAY BE REPRODUCED WITH ACKNOWLEDGEMENT GIVEN. ANY COMMENTS SHOULD BE SENT TO THE STATE CARTOGRAPHER'S OFFICE, 155 SCIENCE HALL, UNIVERSITY OF WISCONSIN, MADISON, WI 53706 (608) 262-3065. ART ZIEGLER, STATE CARTOGRAPHER C. REINHARD, EDITOR