



Wisconsin GITA Announces:

LiDAR Technology and Applications

Luncheon

September 24, 2013
10:00 AM – 2:00 PM

Mark your calendars for Tuesday, September 24th, 2013, and plan to attend the upcoming "LiDAR Technology and Applications" luncheon sponsored by the Wisconsin Chapter of the Geospatial Information and Technology Association and hosted by the **American Transmission Company**. Don't miss this opportunity to learn about aerial- and ground-based LiDAR platforms and how they support everyday engineering and land information management.

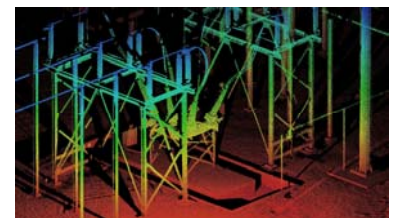
Aerial LiDAR – featuring guest presenter from the Dane County Land Information Office. For LiDAR acquired from a fixed-wing aircraft, focus was traditionally placed on developing wide-area topographic mapping. Recent advancements, however, have expanded its use for specialized applications – including inventory of transmission and distribution networks and route selection studies.



Helicopter LiDAR – featuring guest presenter from the American Transmission Company. Helicopter-based LiDAR systems are an important tool for the electrical transmission and distribution industry. These systems are commonly used by electrical engineers to support as-built surveys, line re-ratings, and monitoring of encroachment.

Mobile LiDAR – featuring guest presenter from the Wisconsin Department of Transportation. Precision measurement from vehicle-mounted LiDAR sensors supports asset management and transportation design. Capable of survey-grade accuracy, this is an efficient means of collecting surface and infrastructure information along corridors.

HD Scanning – featuring guest presenter from the Milwaukee Metropolitan Sewerage District. A wide array of terrestrial LiDAR scanners are built for specific tasks – including high accuracy 3D drawings of substations, industrial facilities, architecture, and transportation infrastructure.



Location:

American Transmission Company Headquarters
W234 N2000 Ridgeview Pkwy Ct
Waukesha, WI 53188-1022
(map located on following page)

Cost:

The seminar is **FREE**. Lunch will be provided.

Event Sponsored By:





American Transmission Company

Directions to Pewaukee Office

W234 N2000 Ridgeview Parkway Court, Waukesha, WI 53188-1022

Phone: 262-506-6700

www.atcllc.com

From Downtown Milwaukee

- Take I-94 West
- Exit #295 (Hwy F North)
- Turn right onto Hwy F
- At first traffic light, turn left onto Ridgeview Pkwy West to four-way stop
- Veer right on Ridgeview Pkwy West and follow to Ridgeview Pkwy Court
- Turn left onto Ridgeview Pkwy Court
- Visitor parking is to the right of the cul de sac

From Mitchell International Airport (approx 30-45 min. drive)

- Take I-94 West to I-894 West (bypass) toward Madison
- Take I-894 West until it rejoins I-94 West
- Take I-94 West toward Madison
- Exit #295 (Hwy F North)
- Turn right onto Hwy F
- At first traffic light, turn left onto Ridgeview Pkwy West to four-way stop
- Veer right on Ridgeview Pkwy West and follow to Ridgeview Pkwy Court
- Turn left onto Ridgeview Pkwy Court
- Visitor parking is on the right of the cul de sac

Please check in at the front desk when you arrive.

