

ANNUAL REPORT 2014-2015

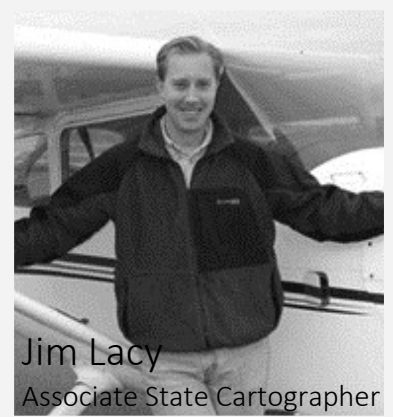


WHO WE ARE

STAFF



Howard Veregin
State Cartographer



Jim Lacy
Associate State Cartographer

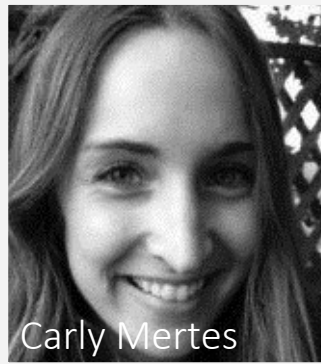
PROJECT STAFF



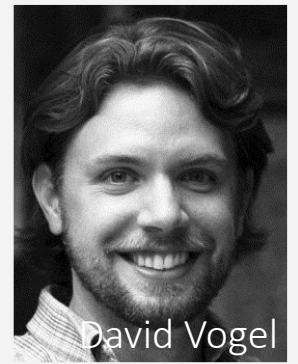
Matt Bougie



Jo Horton



Carly Mertes



David Vogel

AFFILIATED STAFF

Jay Scholz Science Hall IT Manager

Geography Department Financial Specialist (position currently vacant)

The SCO provides support for the Science Hall IT Manager and shares a Financial Specialist with the Geography Department.

ALUMNI

For information on the 200+ alumni who have worked at the SCO over the past 40+ years see www.sco.wisc.edu/sco/alumni.html

CONTACT INFORMATION

384 Science Hall, 550 N. Park Street
Madison, WI 53706-1491

Phone: (608) 262-3065

Email: sco@wisc.edu

Web: www.sco.wisc.edu



www.youtube.com/user/wistcart



twitter.com/wistcart



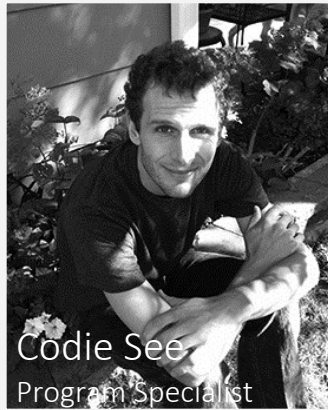
www.linkedin.com/company/state-cartographer%27s-office



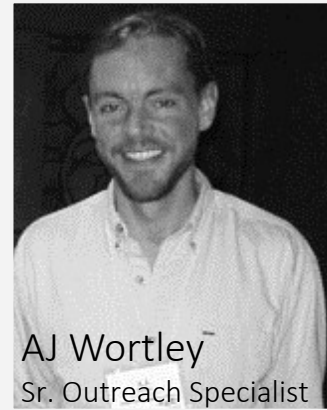
delicious.com/wistcart



Brenda Hemstead
Data Services Professional



Codie See
Program Specialist



AJ Wortley
Sr. Outreach Specialist

STUDENT ASSISTANTS & INTERNS

Patrick Donahue GIS Certificate student, Geography Dept., UW-Madison. SCO student assistant until March, 2015. Currently employed by the Wisconsin Dept. of Agriculture, Trade and Consumer Protection.

Mitch Johnson GIS Certificate student, Geography Dept., UW-Madison. SCO student assistant since June, 2015.

Richard Lee Undergrad student, Electrical and Computer Engineering, UW-Madison. SCO student assistant until May, 2015. Currently a Software Intern at Miller Electric Manufacturing in Appleton, WI.

Angela Limbach GIS Certificate student, Geography Dept., UW-Madison. SCO student assistant until December, 2014. Currently employed by UW-Madison.

Tobin McGilligan Undergrad student, Geography Dept., UW-Madison. SCO student assistant since December, 2014.

Morgan Ripp Undergrad student, Geography Dept., UW-Madison. SCO student assistant until May, 2015. Currently GIS Specialist and Database Assistant at Operation Wallacea, Cusuco, Honduras.

Renee Rollman GIS Certificate student, Geography Dept., UW-Madison. SCO student assistant until June, 2015. Currently GIS Technician with the City of Greenfield, WI.

Michael Schmelter Undergrad student, Geography Dept., UW-Madison. SCO student assistant and intern with the Wiscland 2 land cover project in Spring Semester, 2015. Currently training at the US Air Force Academy.

Chris Scheele GIS Certificate student/graduate student, Geography Dept., UW-Madison. Student assistant since May, 2015.

Samuel Schumacher GIS Certificate student, Geography Dept., UW-Madison. SCO student assistant until December, 2014. Currently an independent contractor, Madison, WI.

Will Westbury GIS Certificate student, Geography Dept., UW-Madison. SCO student assistant since December, 2014.

Caitlin Wolters Undergrad student, Geography Dept., UW-Madison. SCO student assistant until December, 2014. Currently an independent contractor, Madison, WI.

WHAT WE DO

STATUTORY RESPONSIBILITIES



1. MAINTAIN A CATALOG of current and historic reference and thematic maps of Wisconsin available in municipal, county, state, and federal agencies.

2. COORDINATE AND PROMOTE COOPERATION amongst municipal, county, state, and federal mapping agencies and surveyors to facilitate coordination and exchange information on mapping and cartographic activities.

3. STAY UP-TO-DATE on the progress made by mapping agencies and their mapping developments.

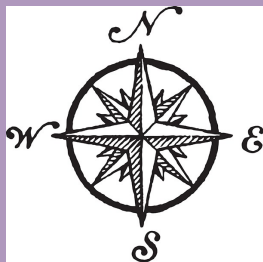
4. COLLECT AND DISSEMINATE INFORMATION about innovations in cartographic techniques and procedures, map and air photo indexes, control data, map accuracy standards, legal aspects of map publication, and other topics in order to facilitate an effective cartographic program for the state.

5. PUBLISH AND DISTRIBUTE SPECIAL MAPS and map information to promote the mapping of the state and the use of maps by individuals, as long as such publication and distribution is not appropriately within the activities of any other state or commercial agency.

6. ASSIST THE DEPARTMENT OF NATURAL RESOURCES in its work as the state representative of the US Board on Geographic Names and its other functions.

Source: Wisconsin State Statutes, Chapter 36.25 docs.legis.wisconsin.gov/statutes/statutes/36/25

MISSION



OUR MISSION is to foster the development of Wisconsin's geospatial community by facilitating the creation and exchange of geospatial data, services, and information, and promoting their use in support of education, innovation, and delivery of services to the state's citizens.

OUR VISION is a Wisconsin geospatial community that is well-informed, supported, and collaborative, and that operates on complete, up-to-date, integrated information for effective analysis and service delivery.

OUR MISSION EMBODIES THE WISCONSIN IDEA, the principle that education should influence people's lives beyond the classroom, and that knowledge and expertise within the University of Wisconsin should enhance the quality of life for all citizens of the state.

Source: SCO 2013-16 Strategic Plan www.sco.wisc.edu/images/stories/SCO/SCO_Strategic_Plan_2013-2016.pdf

STRATEGIC PRIORITIES, 2013-16



EDUCATION AND TRAINING. Deliver and support geospatial education and training opportunities.

RESEARCH AND INNOVATION. Engage in applied research and innovative projects to develop and disseminate information about new methods and practices.

DATA DEVELOPMENT AND INTEGRATION. Develop methods and best practices for statewide data development and data integration, with the goal of supporting regional, state, and national analysis and decision support.

DATA DISCOVERY. Improve online data discovery and access for the Wisconsin geospatial community and citizens, with the goal of providing efficient and timely access to best available data sources.

SUPPORT AND ENGAGEMENT. Continue efforts to engage, inform, coordinate, and support the Wisconsin geospatial community.

Source: SCO 2013-16 Strategic Plan www.sco.wisc.edu/images/stories/SCO/SCO_Strategic_Plan_2013-2016.pdf

FUNDING



THE SCO IS A STATUTORILY ENABLED SPECIAL PROGRAM AT UW-MADISON. The office sits within the Department of Geography in the College of Letters & Science. We receive an annual base budget allocation from the College for personnel and operating expenses. Additional financial support from the Division of Continuing Studies facilitates our outreach mission. Grants and contracts make up the remainder of our funding.

COMMITTEE ON STATE CARTOGRAPHY



THE COMMITTEE ON STATE CARTOGRAPHY (CSC) is the SCO's steering committee, providing advice and feedback to the office. CSC members are drawn from our user community, and are appointed by the Dean of the College of Letters & Science at UW-Madison. Traditionally, the CSC has been chaired by a faculty member in the Department of Geography at UW-Madison. Beginning in August 2011, our newest CSC chair is Professor Rob Roth.

SELECTED PROJECTS

WISCLAND 2

GOAL Create a new digital statewide land cover layer to replace the current layer developed in the 1990s

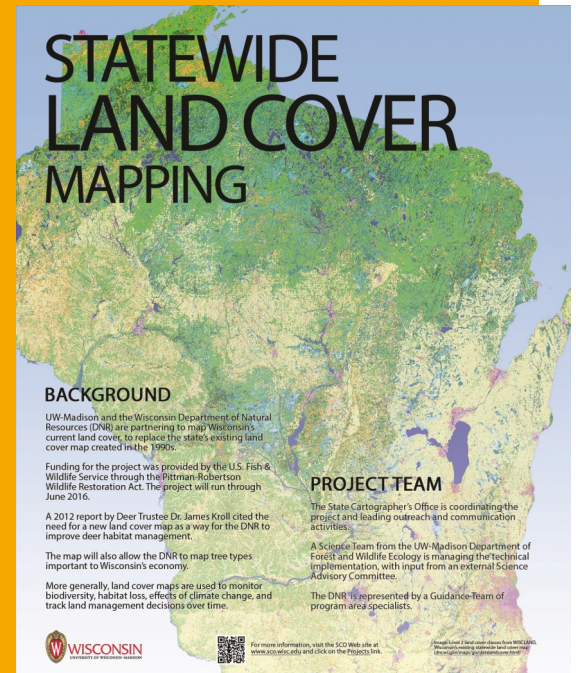
PARTNERS Department of Forest & Wildlife Ecology, UW-Madison; Wisconsin Department of Natural Resources (DNR)

FUNDING \$432,000 from the DNR through the US Fish & Wildlife Service/Pittman-Robertson Wildlife Restoration Act, as directed in Wisconsin's 2013-15 biennial budget

TIMELINE May 1, 2014 to June 30, 2016

WEBSITE

www.sco.wisc.edu/projects/landcover.html



LinkWISCONSIN ADDRESS POINT AND PARCEL PROJECT

GOAL Create digital statewide layers of tax parcels and address points for the Public Service Commission of Wisconsin

PARTNERS Wisconsin Department of Administration (DOA), Public Service Commission of Wisconsin (PSCW), county/municipal land information offices

FUNDING \$163,000 from the PSCW through an American Recovery and Reinvestment Act grant awarded by the National Telecommunications and Information Administration

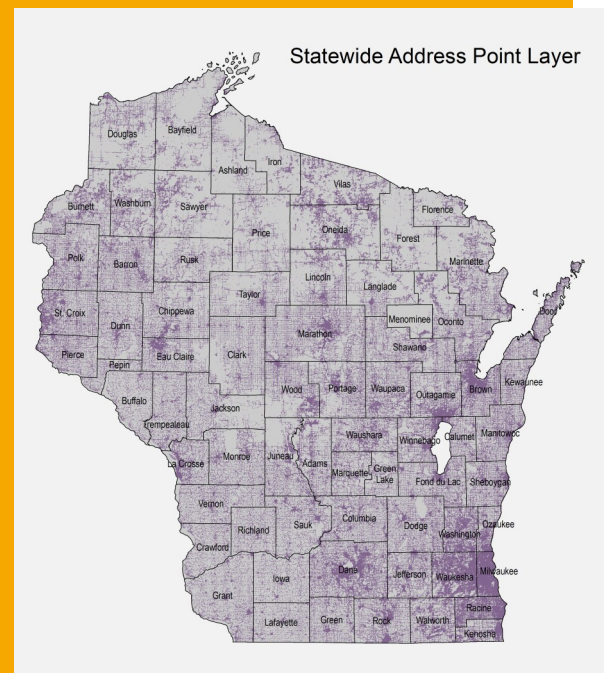
TIMELINE July 1, 2013 to Sept 30, 2014

REPORT

www.sco.wisc.edu/images/stories/publications/APPMP_Report_Web_September2014.pdf

DATASET FTP

www.link.wisconsin.gov/data



AND GRANTS

www.sco.wisc.edu/projects

STATEWIDE PARCEL PROJECT, VER. 1 & 2

GOAL Create a digital statewide tax parcel layer from county and municipal datasets, including all attributes required by statute, and make the layer publicly available online

PARTNERS Wisconsin Dept. of Administration (DOA); county/municipal land information offices

FUNDING \$248,000 from the DOA, the agency identified in Wisconsin's 2013-15 biennial budget as being responsible for the state's multi-year parcel map implementation plan

TIMELINE July 1, 2014 to Dec. 31, 2016

VER. 1 REPORT

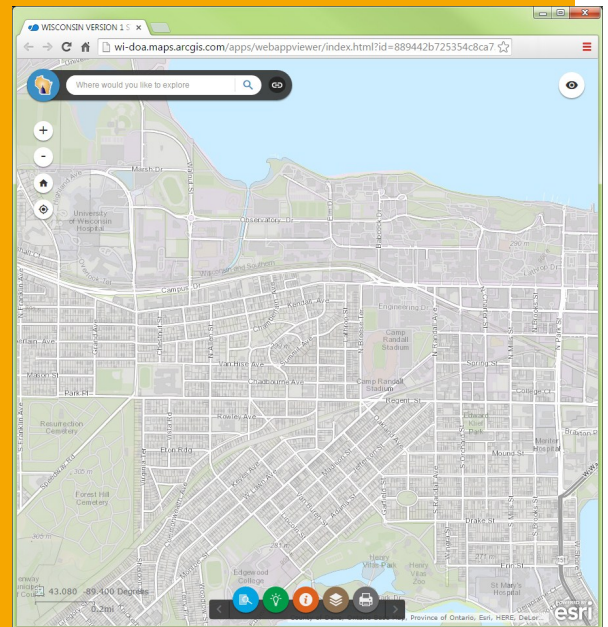
www.sco.wisc.edu/images/stories/publications/V2/V1_Parcel_Project_Interim_Report_FINAL_20150630.pdf

SCO WEBSITE

www.sco.wisc.edu/projects/v1-parcels.html

DOA WEBSITE

www.doa.state.wi.us/Divisions/Intergovernmental-Relations/Land-Information-Program/Statewide-Parcel-Map-Initiative



WISCONSIN HISTORIC LANDSCAPE PROJECT

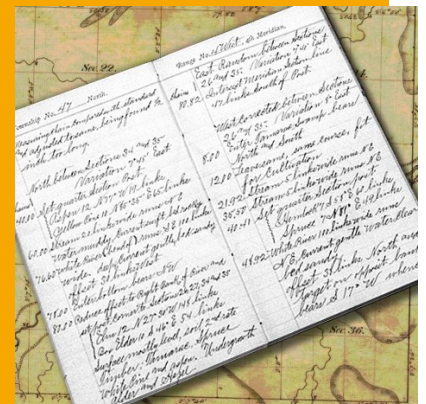
GOAL Conduct a series of community forums to identify ways to improve access to a digital database of the Government Land Office survey of Wisconsin conducted in the 1800s

PARTNERS David Mladenoff Forest Ecosystem and Landscape Ecology Lab, UW-Madison

FUNDING \$4000 mini-grant from the Ira and Ineva Reilly Baldwin Wisconsin Idea Endowment, UW-Madison

TIMELINE July 1, 2015 to June 30, 2016

WEBSITE www.sco.wisc.edu/glo/



SERVICE LEARNING

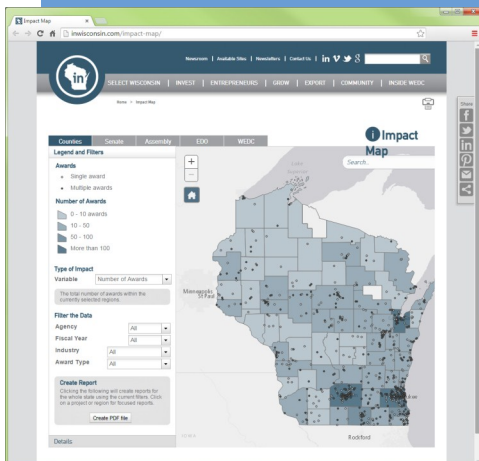
The SCO has several service-learning projects currently underway through which our student assistants are actively engaged in real-world applications. These project allow our students to be involved in requirements gathering, technical production, and user testing, providing an excellent opportunity to use technical and programming skills in an applied way.



SCHOOL OF EDUCATION GLOBAL IMPACT MAP

The SCO and UW-Madison Cartography Lab are partnering on a project to create an online interactive map of international collaborative activities within the UW School of Education. The project is sponsored by the School of Education and the Division of International Studies.

AUTOMATIC VEHICLE LOCATOR MAP The SCO developed an online automatic vehicle locator application for SharedGeo and the city of St. Paul, Minnesota. SharedGeo is a Minnesota geospatial nonprofit with a mission of helping government, nonprofits, education, and the private sector use geospatial technology for the public good.



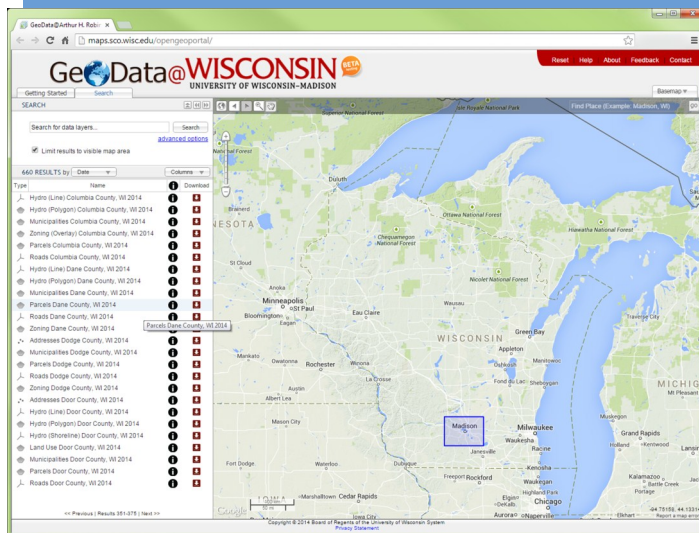
WISCONSIN ECONOMIC DEVELOPMENT CORPORATION

IMPACT MAP The SCO has partnered with Pangea Studios at UW-Whitewater, the UW-Madison Cartography Lab, and Professor Qunying Huang (Dept. of Geography, UW-Madison) to develop an interactive “impact map” for the Wisconsin Economic Development Corporation. This map is available on the WEDC website at inwisconsin.com/impact-map

WISCONSIN OFFICE OF RURAL HEALTH The SCO is conducting a drive-time analysis of 64 hospitals in the state followed by an analysis of population distribution combining Census data with other locally-sourced data (such as parcels) to refine Census population counts.

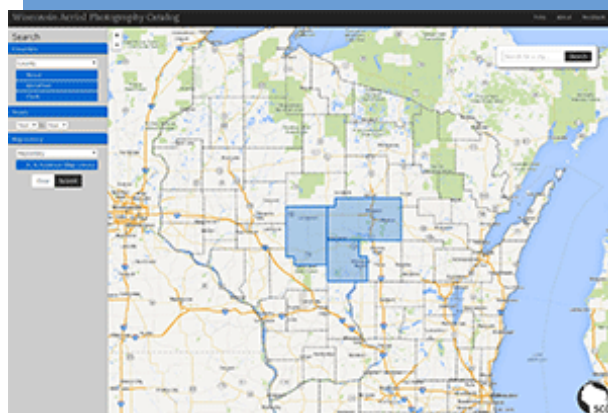
INTERNAL PROJECTS

The SCO's internal projects include efforts to upgrade and enhance our online applications, which serve our core mission of information and data dissemination. Currently two of our biggest projects are GeoData@UW-Madison and an upgrade to the online Air Photo Catalog. Our student assistants are actively engaged in these projects.



GEODATA@UW-MADISON The SCO developed GeoData@UW-Madison in collaboration with the UW-Madison Robinson Map Library. The application was formally released to the public in January, 2015. GeoData@UW-Madison is an online geoportal designed to provide discovery and download capability for local Wisconsin geospatial data. The portal combines a map-based search interface along with traditional text-based metadata search tools for data discovery. At present, GeoData@UW-Madison is available exclusively for research and educational

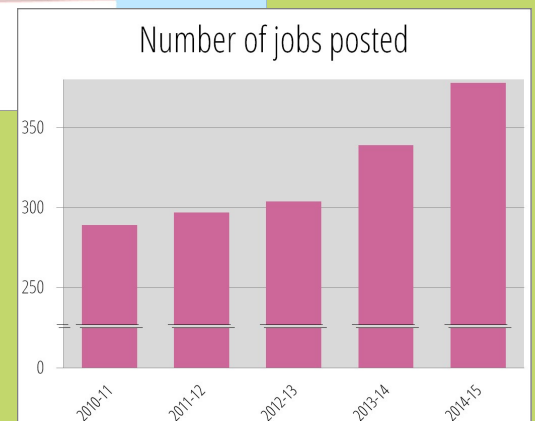
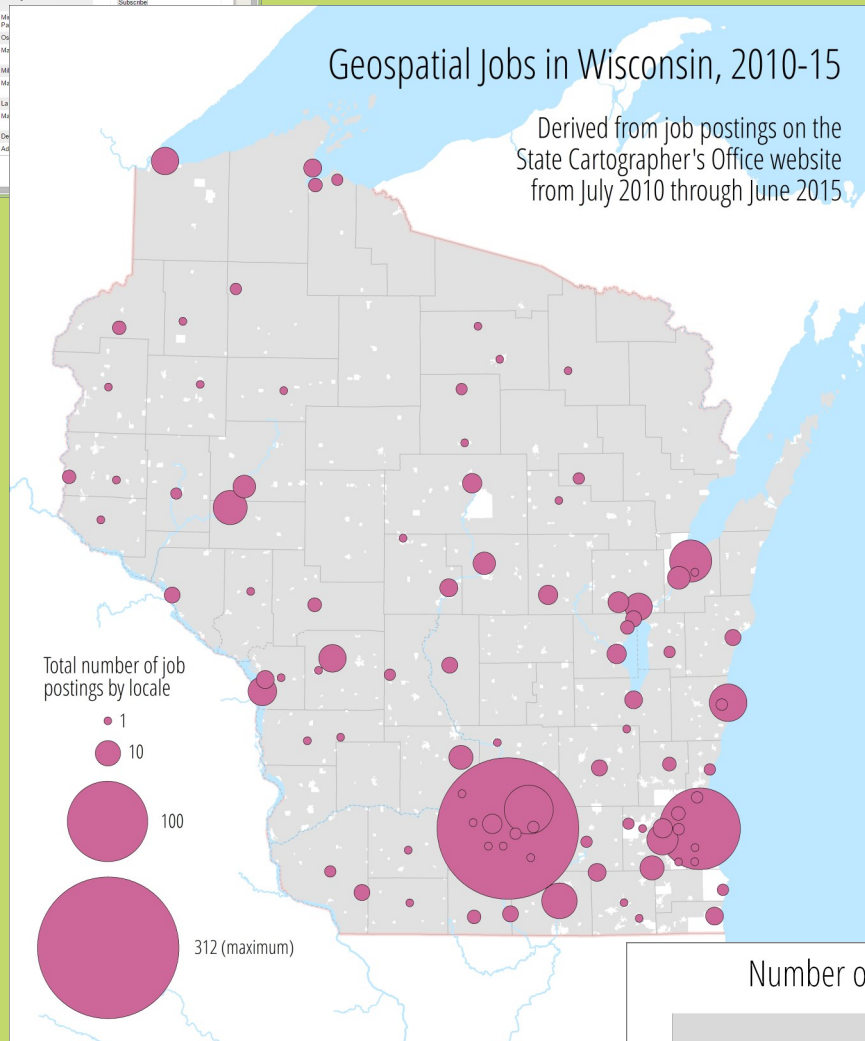
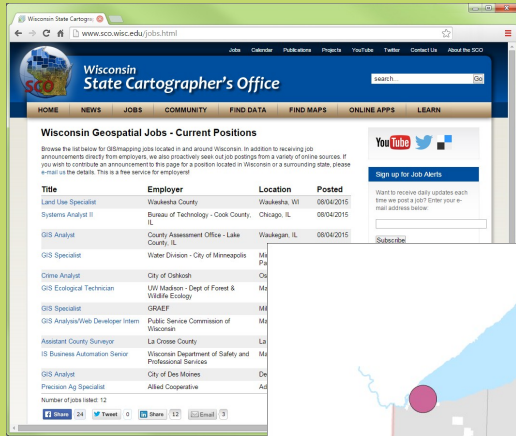
use for faculty, staff, and students of UW-Madison. Future efforts include collaboration with other UW institutions and the Wisconsin GIO's office. GeoData@UW-Madison is available at www.sco.wisc.edu/uw-geodata/uw-geodata.html



AIR PHOTO CATALOG The SCO's online Air Photo Catalog provides a comprehensive listing of aerial photography of Wisconsin acquired by federal, state, and local agencies and other groups. This catalog is the most comprehensive record of aerial photography in Wisconsin to date, containing information for over 3000 projects. In the fall of 2013, the office began working on an update to the catalog including validation of existing records and an improved user interface. This project is still in work but has been identified as a top priority in our most recent business plan.

GEOSPATIAL JOBS

One of the most popular pages on the SCO website is the Geospatial Jobs Page, which contains job postings in Wisconsin and some neighboring states.



www.sco.wisc.edu/jobs.html

SCO IN THE NEWS

Wiscland 2 project team interviewed for Fox 11 TV, Green Bay, October 2014.
fox11online.com/news/local/new-state-map-takes-shape-in-madison

UW cartographers map out solution to deer overpopulation. The Badger Herald, Oct. 9, 2014.
badgerherald.com/news/2014/10/09/uw-cartographers-map-out-solution-to-deer-overpopulation

Update of state land-cover map to help figure deer range. Milwaukee Journal Sentinel, Oct. 11, 2014.
www.jsonline.com/sports/outdoors/outbits12-b99368500z1-278911981.html

Statewide historic aerial photo application (www.sco.wisc.edu/WHAIFinder) highlighted on Larry Meiller Show on NPR, Oct. 29, 2014.

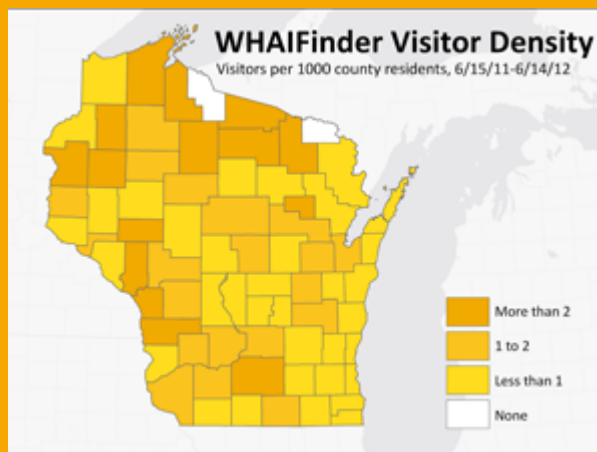
Maps for all: Making Wisconsin's historic landscape information more accessible. eCals newsletter, June 21, 2015. ecals.cals.wisc.edu/2015/06/21/maps-for-all

WEBSITE USAGE

www.sco.wisc.edu

The SCO website is a vital communication tool that supports our outreach and information dissemination missions. SCO website usage rates continue to increase year after year. Our website attracts visitors from every Wisconsin county, all US states, and over 180 countries worldwide.

	SCO website	
	2014-15 TOTAL	AVERAGE ANNUAL GROWTH SINCE 2011-12
Pageviews	495,873	+13.5%
Sessions	241,812	+19.4%
Users	157,858	+26.9%



We have conducted research and published several articles that use maps and spatial analysis of SCO website usage statistics to assess whether we are achieving our goal of reaching users in all corners of the state.

Poster detailing more SCO website analytics results:
www.sco.wisc.edu/images/stories/projects/sco_poster_2013_lowres2.jpg

PUBLICATIONS

MAPPING BULLETIN www.sco.wisc.edu/news

From July 2014 to June 2015 we published 78 articles in the Mapping Bulletin

SCO PUBLICATIONS www.sco.wisc.edu/publications

2014 WLIP Report. Co-authored with Wisconsin Department of Administration.

www.sco.wisc.edu/images/stories/publications/2014_WLIP_Report_09.24.14.pdf

Final Report, 2015 Surveying-Parcel Forum. www.sco.wisc.edu/images/stories/publications/Surveying_Parcel_Forum_2015_Final_Project_Report.pdf

Final Report, LinkWISCONSIN Address Point and Parcel Mapping Project. Co-authored with Wisconsin Department of Administration www.sco.wisc.edu/images/stories/publications/APPMP_Report_Web_September2014.pdf

Geodata@UW-Madison. SCO Infosheet.

www.sco.wisc.edu/images/stories/publications/2015/UW_OpenGeoportal_Jan2015.pdf

LinkWISCONSIN Address Point and Parcel Mapping Project. SCO Infosheet. [Revision]

www.sco.wisc.edu/images/stories/publications/LinkWISCONSIN_january2015.pdf

Statewide Parcel Database Project. SCO Infosheet. [Revision]

www.sco.wisc.edu/images/stories/publications/statewide_parcel_project_january2015.pdf

Version 1 Statewide Parcel Map Project: Interim Report and Digital Appendices. Co-authored with Wisconsin Department of Administration. www.sco.wisc.edu/images/stories/publications/V2/V1_Parcel_Project_Interim_Report_FINAL_20150630.pdf

PROFESSIONAL PUBLICATIONS BY SCO STAFF

C. Mertes, A. Schneider, D. Sulla-Menashe, A. Tatem, and B. Tan. 2015. Detecting change in urban areas at continental scales with MODIS data. *Remote Sensing of Environment*, 158 doi:10.1016/j.rse.2014.09.023. **

A. Schneider, **C.M. Mertes**, A.J. Tatem, B. Tan, D. Sulla-Menashe, S.J. Graves, N.N. Patel., **J.A. Horton**, A.E. Gaughan, J.T. Rollo, I.H. Schelly, F. Stevens, and A. Dastur. 2015. A new urban landscape in East and Southeast Asia, 2000 - 2010. *Environmental Research Letters*, 10, doi:10.1088/1748-9326/10/3/034002. **

H. Veregin. (2015). Using maps in Web analytics to evaluate the impact of Web-based Extension programs. *Journal of Extension*, 53(3). http://www.joe.org/joe/2015june/pdf/JOE_v53_3iw2.pdf

** The research for these publications was carried out before Carly Mertes and Jo Horton became affiliated with the SCO.

CONFERENCES

PRESENTATIONS

- B. Hackett & **H. Veregin**. *Population Density Mapping Using the Dasymetric Method*. Wisconsin Land Information Association Annual Conference, Green Bay, Feb. 2015.
- B. **Hemstead**. *Aligning County Surveying and Parcel Mapping Efforts in Wisconsin*. Wisconsin County Surveyors Association Annual Membership Meeting, Wisconsin Dells, Jan. 2015.
- B. **Hemstead**. *Analysis of County Boundary PLSS Corner Coordinate Records in Wisconsin*. Forum on Aligning County Surveying and Parcel Mapping Efforts, UW-Stevens Point, March 2015.
- C. **Mertes** & **J. Horton**. *Wiscland 2: Updating Wisconsin's Land Cover Map*. Wisconsin Land Information Association Annual Conference, Green Bay, Feb. 2015. [Also presented at: American Society for Photogrammetry and Remote Sensing Spring Spotlight, Eau Claire, April 2015; Geospatial Summit, UW-Madison, April 2015]
- B. Meyer & **B. Hemstead**. *Statewide Parcel Map and County Boundaries — Some Intricate Assembly Required*. Wisconsin Land Information Association Annual Conference, Green Bay, Feb. 2015.
- C. **See**. *A View of Wisconsin's Statewide Parcel Payer*. Forum on Aligning County Surveying and Parcel Mapping Efforts, UW-Stevens Point, March 2015.
- C. **See** & **D. Vogel**. *Status of Wisconsin's Statewide Parcel Map*. Wisconsin Land Information Association Annual Conference, Green Bay, Feb. 2015.
- J. Stoltenberg, E. Bettinger, **AJ Wortley**, M. Goettl. *OpenGeoportal and UW Libraries: Making Wisconsin Data Available to Students, Researchers, and Future Generations*. Wisconsin Land Information Association Annual Conference, Green Bay, Feb. 2015. [Also presented at Geospatial Summit, UW-Madison, April 2015]
- J. Stoltenberg, **AJ Wortley** & **H. Veregin**. *GeoData@UW-Madison: Improving Campus Access to Geospatial Data*. Showcase 2015, University of Wisconsin-Madison. [Poster]
- H. Veregin**. *Phase 1 State Parcel Map Project*. Wisconsin Real Property Listers Association Annual Meeting, Sheboygan, Sept. 2014.
- H. Veregin** & P. Herreid. *County Parcel Data Standards and Benchmarks for the Statewide Parcel Map Initiative*. Wisconsin Land Information Association Spring Conference, Eagle River, June 2015.
- H. Veregin** & **C. See**. *Wisconsin's Statewide Parcel Database Initiative*. Minnesota GIS/LIS Annual Conference, Rochester, Minnesota, Oct. 2014.
- AJ Wortley**. *Making the Case for Open GIS Data in Wisconsin*. Wisconsin Land Information Association Annual Conference, Green Bay, Feb. 2015.
- AJ Wortley** & **C. See**. *Getting Started with Open Source for GIS and Mapping*. GIS Day, UW-Madison, Nov. 2014.

CONFERENCES ORGANIZED

- GIS DAY** UW-Madison, Nov. 2014. Two keynote speakers, 6 presentations, 13 exhibitors and 125 attendees. Co-sponsored and organized by the Robinson Map Library, the Land and Computer Graphics Facility, and the GIS Certificate Program.
- GEOSPATIAL SUMMIT** UW-Madison, April 2015. Two keynote speakers, 13 presentations, and over 100 attendees. Co-organized by the UW-Madison Geospatial Alliance.
- ALIGNING COUNTY SURVEYING AND PARCEL MAPPING EFFORTS IN WISCONSIN** UW-Stevens Point, March 2015. Over 100 attendees. Facilitated by a \$500 Statewide Outreach Incentive Grant to the SCO from the Office of University Relations, University of Wisconsin-Madison.

COORDINATION AND

GEOSPATIAL ASSOCIATIONS & AGENCIES

AMERICAN SOCIETY FOR PHOTOGRAMMETRY & REMOTE SENSING (ASPRS) Electronic Communications Committee (Lacy)

AMERICAN SOCIETY FOR PHOTOGRAMMETRY & REMOTE SENSING (ASPRS) WESTERN GREAT LAKES REGION Board of Directors, Treasurer, Event registrar, Website development (Lacy)

CARTOGRAPHY AND GEOGRAPHIC INFORMATION SOCIETY (CAGIS) Board of Directors (Veregin) :: Chair, Website committee (Veregin)

GEOSPATIAL STRATEGY WORKING GROUP, WIGICC/WLIA SCO Rep (Veregin, Wortley)

LAND INFORMATION OFFICERS NETWORK (LION) SCO Rep (Wortley)

MASTER OF GIS PROGRAM, UNIVERSITY OF MINNESOTA Advisory Board member (Veregin)

NATIONAL DIGITAL ORTHOPHOTO STEERING COMMITTEE NSGIC liaison (Lacy)

NATIONAL GEODETIC SURVEY (NGS) Coordination for condition reports (Hemstead)

NATIONAL STATES GEOGRAPHIC INFORMATION COORDINATION COUNCIL (NSGIC) State Reps (Lacy, Veregin) :: NSGIC Representative, National Digital Orthophotography Steering Committee (Lacy) :: Facilitator, Strategic Planning process (Lacy)

STATE AGENCY GEOSPATIAL INFORMATION COMMITTEE (SAGIC) SCO Rep (Lacy) :: GIS Inventory Committee (Wortley)

US GEOLOGICAL SURVEY (USGS) 3D Elevation Program state contact (Veregin) :: National Hydro Database Requirements study state contact (Veregin)

WISCONSIN COUNTY SURVEYORS ASSOCIATION (WCSA) SCO Rep (Hemstead)

WISCONSIN DEPARTMENT OF ADMINISTRATION (DOA), DIVISION OF INTERGOVERNMENTAL RELATIONS GIO Search Committee (Veregin) :: Project partner for statewide parcel project (See, Veregin, Vogel) :: WLIP 3-year County Land Information Plan Working Group (Wortley) :: Geoportal Recommendation Working Group (Wortley)

WISCONSIN DEPARTMENT OF NATURAL RESOURCES (DNR) Project partner for WiscLand 2 project (Bougie, Horton, Lacy, Mertes, Veregin) :: Participation in DNR Field Technician Training (Horton, Mertes)

WISCONSIN DEPARTMENT OF REVENUE (DOR) Coordination of DOR XML format for statewide parcel data submission process (See, Veregin, Vogel)

WISCONSIN GEOGRAPHIC NAMES COMMITTEE Ex officio member (Veregin)

WISCONSIN GEOGRAPHIC INFORMATION COORDINATION COUNCIL (WIGICC) Ex officio member (Veregin)

WISCONSIN GEOSPATIAL STRATEGY WORKING GROUP Members (Veregin, Wortley)

WISCONSIN LAND INFORMATION ASSOCIATION (WLIA) Board of Directors (Lacy) :: Secretary of Board of Directors (Lacy) :: Communications Committee member (Lacy) :: Conference Planning Committee member (Hemstead, Wortley) :: Education Committee member (Lacy) :: Legislative Committee member (Wortley) :: Membership Committee Vice-Chair (Lacy) :: Scholarship Committee member (Wortley)

WISCONSIN PRESIDENTS' COUNCIL Coordination, meeting facilitation (Lacy) :: Ex officio member (Veregin)

WISCONSIN REGIONAL ORTHOPHOTOGRAPHY CONSORTIUM (WROC) State Agency Liaison (Lacy)

WISCONSIN SOCIETY OF LAND SURVEYORS (WSLS) Web Site Committee, SCO Rep (Hemstead)

WISCONSIN STATE TRAILS COUNCIL Discussion of US National Grid implementation (Veregin)

OUTREACH

CONFERENCES ATTENDED

AMERICAN SOCIETY FOR PHOTOGRAMMETRY & REMOTE SENSING (ASPRS) Spring Spotlight, Eau Claire, April 2015 (Horton, Mertes)

AMERICAN SOCIETY FOR PHOTOGRAMMETRY & REMOTE SENSING (ASPRS) WESTERN GREAT LAKES REGION Annual Meeting, St. Paul, Minnesota, Jan. 2015 (Lacy)

ASSOCIATION OF AMERICAN GEOGRAPHERS (AAG) Annual Meeting, Chicago Illinois, April 2015 (Veregin)

ASSOCIATION OF STATE FLOODPLAIN MANAGERS (ASFPM)/NATIONAL OCEANIC AND ATMOSPHERIC ADMINISTRATION (NOAA) No Adverse Impact Resilience Workshop, Milwaukee, Aug. 2014 (Wortley)

ESRI WISCONSIN USERS' GROUP (EWUG) Annual Meeting, Wisconsin Dells, Oct. 2014 (See, Veregin, Vogel)

FORUM ON ALIGNING COUNTY SURVEYING AND PARCEL MAPPING EFFORTS UW-Stevens Point, March 2015 (SCO staff)

GEOSPATIAL SUMMIT UW-Madison, April 2015 (SCO staff)

GIS DAY UW-Madison, Nov. 2014 (SCO staff)

GOVERNOR'S CONFERENCE ON ECONOMIC DEVELOPMENT Madison, Feb. 2015 (Veregin)

ILLINOIS GIS ASSOCIATION (ILGISA) Annual Meeting, Naperville, Illinois, Oct. 2014 (Lacy)

MINNESOTA GIS/LIS CONSORTIUM Annual Meeting, Rochester, Minnesota, Oct. 2014 (See, Veregin)

NATIONAL DIGITAL ORTHOPHOTO PROGRAM Steering Committee, Shepherdstown, West Virginia, May 2015 (Lacy)

NATIONAL STATES GEOGRAPHIC INFORMATION COUNCIL (NSGIC) Midyear Meeting, Annapolis, Maryland, Feb. 2015 (Lacy)

NATIVE NATIONS SUMMIT ON ENVIRONMENT AND HEALTH UW-Madison, March 2015 (Veregin)

SHOWCASE 2015 UW-Madison, March 2015 (Veregin, Wortley)

WISCONSIN COUNTIES ASSOCIATION (WCA) Annual Meeting, Wisconsin Dells, Sept. 2014 (Veregin) :: Legislative Exchange, Madison, Feb. 2015 (Veregin)

WISCONSIN COUNTY SURVEYORS ASSOCIATION (WCSA) Board Meetings, Neillsville, 2014-15 (Hemstead) :: Annual Membership Meeting, Wisconsin Dells, Jan. 2015 (Hemstead)

WISCONSIN EXTENSION REIMAGINED WORKSHOP UW-Madison, May 2015 (Veregin)

WISCONSIN LAND INFORMATION ASSOCIATION (WLIA) Fall Regional Meeting, Oct. 2014, Green Lake (SCO staff) :: Annual Conference, Feb. 2015, Green Bay (SCO staff) :: Spring Regional Meeting, June 2015, Eagle River (SCO staff) :: Board of Directors Retreat, Arbor Vitae, March 2015 (Lacy)

WISCONSIN PRESIDENTS' COUNCIL Annual Meeting, Wisconsin Dells, Oct. 2014 (Lacy, Veregin, Wortley)

WISCONSIN REAL PROPERTY LISTERS ASSOCIATION Annual Meeting, Sheboygan, Sept. 2014 (Veregin)

Wisconsin State Cartographer's Office
384 Science Hall
550 N. Park Street
Madison, WI 53706-1491



CONTENTS

Who We Are	2
What We Do	4
Selected Projects and Grants.....	6-7
Service Learning	8
Internal Projects	9
Geospatial Jobs	10
SCO in the News	11
Publications	12
Conferences	13
Coordination and Outreach	14-15