

WISCONSIN DOT SURVEY COORDINATORS

NW Region- Superior
Tom Armstrong, PLS
1701 N. 4th Street
Superior, WI 54880
Office: 715-392-7955
Cell: 715-225-6325
thomas.armstrong@dot.wi.gov

NW Region- Spooner
Christina Martin PLS
W7102 Green Valley Road
Spooner, WI 54801
Office: 715-635-4968
Cell: 715-919-2643
christina.martin@dot.wi.gov

North Central Region
Chris Stebbins, PLS, PS
510 N. Hanson Lake Road
Rhineland, WI 54501
Office: 715-365-5744
Cell: 715-401-3334
christopher.stebbins@dot.wi.gov

Northeast Region
Cormac McInnis, PLS
944 Vanderperren Way
Green Bay, WI 54304
Office: 920-492-5638
Cell: 920-609-5638
cormac.mcinnis@dot.wi.gov

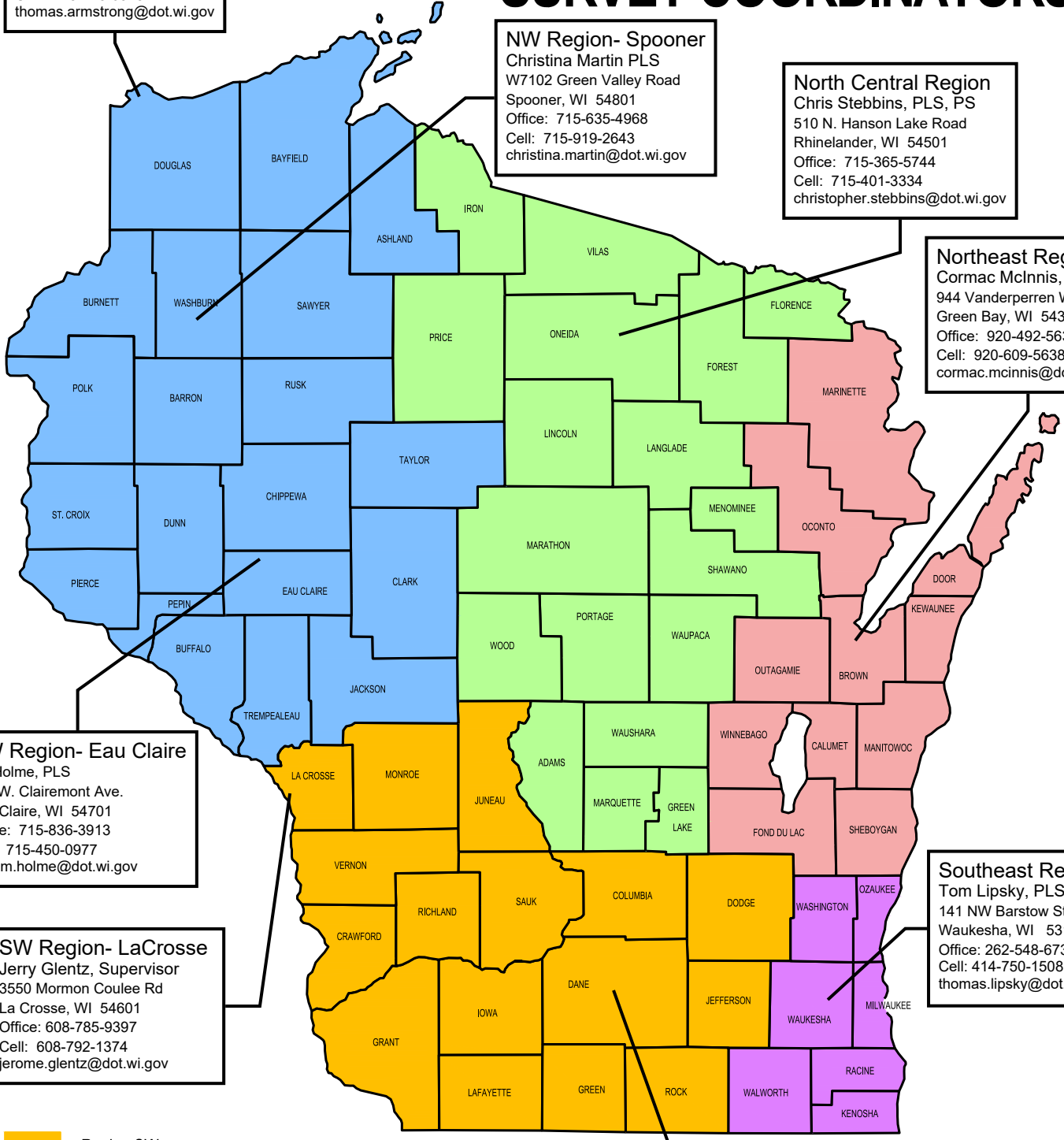
NW Region- Eau Claire
Bill Holme, PLS
718 W. Clairemont Ave.
Eau Claire, WI 54701
Office: 715-836-3913
Cell: 715-450-0977
william.holme@dot.wi.gov

SW Region- LaCrosse
Jerry Glentz, Supervisor
3550 Mormon Coulee Rd
La Crosse, WI 54601
Office: 608-785-9397
Cell: 608-792-1374
jerome.glentz@dot.wi.gov

Southeast Region
Tom Lipsky, PLS
141 NW Barstow Street
Waukesha, WI 53187
Office: 262-548-6737
Cell: 414-750-1508
thomas.lipsky@dot.wi.gov

SW Region- Madison
Patrick Stankiewicz, PLS
2101 Wright Street
Madison, WI 53704
Office: 608-246-7918
Cell: 608 216-8590
patrick.stankiewicz@dot.wi.gov

WISDOT Central Office
Mick Heberlein, PLS, PS, CFedS
3502 Kinsman Blvd.
Madison WI 53704
Office: 608-243-5994
mick.heberlein@dot.wi.gov



- Region SW
- Region SE
- Region NW
- Region NC
- Region NE