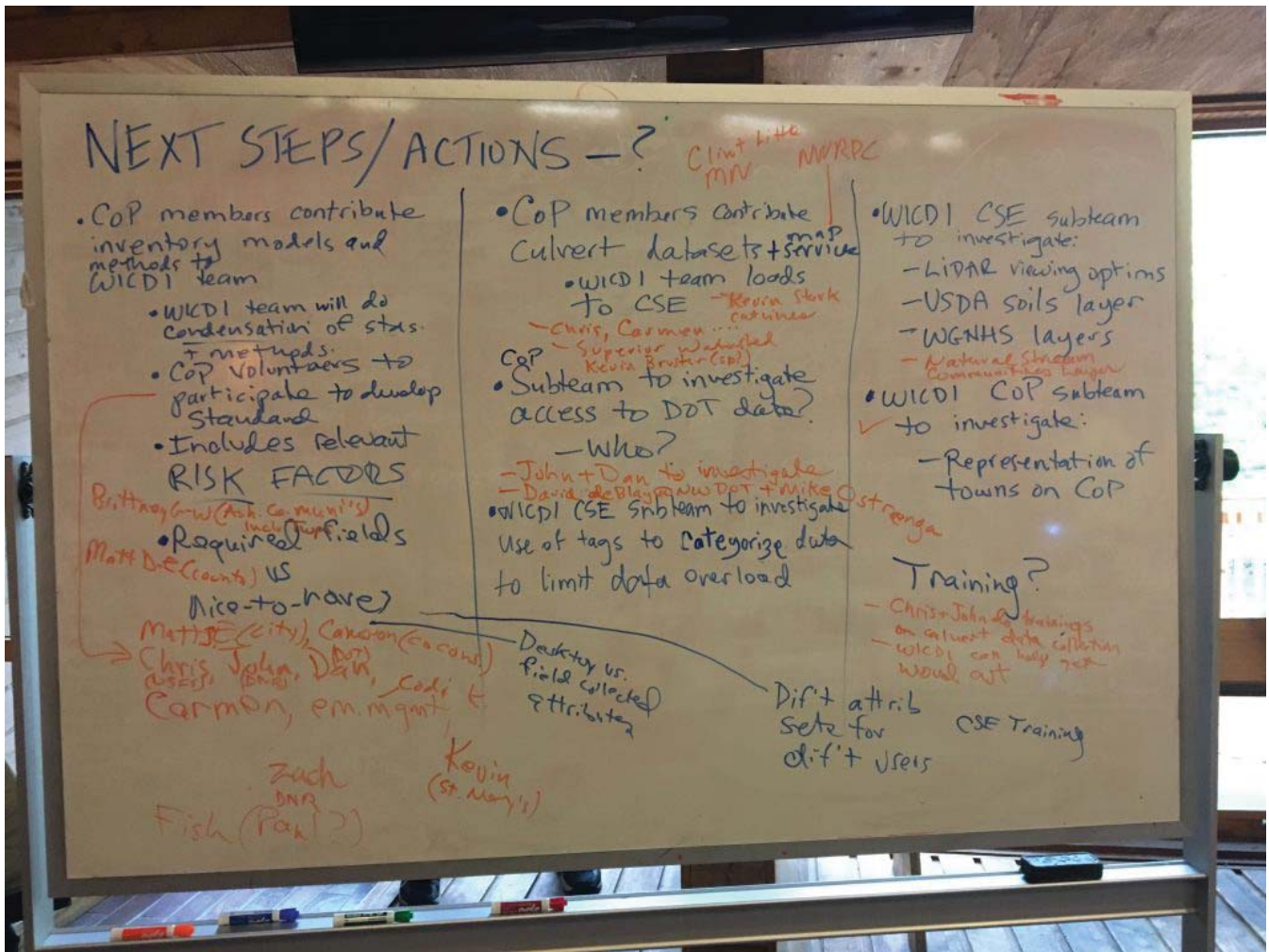




WICDI NEWS

Data Submissions!

If you read our [Fall Workshop Recap](#), you may remember that our main action item from that workshop was to gather all of the culvert data, standards and models already in use by our participants, and begin the messy yet necessary process of making sense of it.



All of the actions brainstormed at the October workshop.

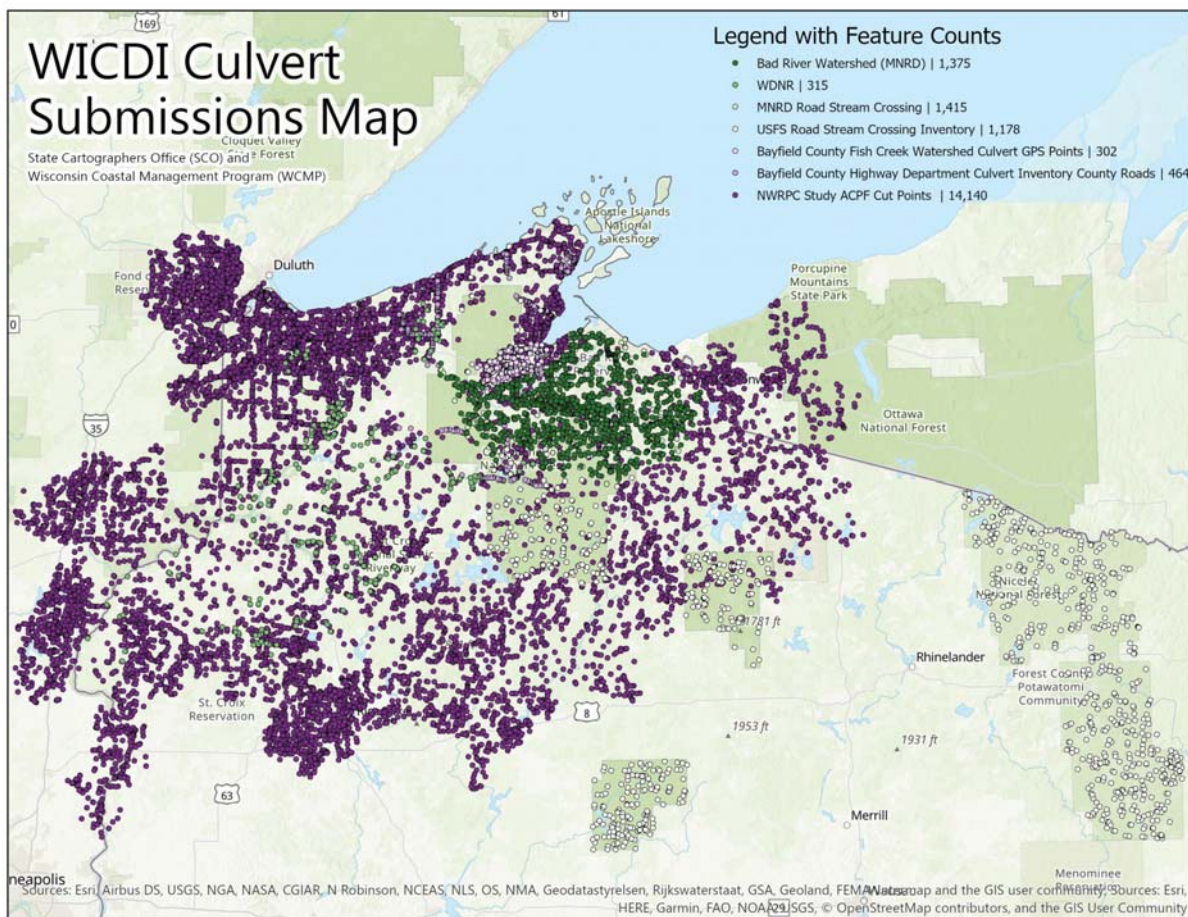
So we put out a call to our community of practice, asking for data and related materials. Since then, we've held our second workshop, and I'm happy to report that we received 7 datasets in the interim, bringing our culvert "data library" count to over 20. The data we've received are:

1. Douglas County Land & Water Conservation Dept: Culvert maintenance spreadsheet

2. Mashkiiziibii Natural Resources Dept (MNRD): Road stream crossing database
3. MNRD/Superior Watersheds: Bad River watershed stream crossing & maintenance database
4. Northwest Regional Planning Commission: Culvert location shapefile using ACPF toolbox
5. Wisconsin DNR: Stream crossing & maintenance spreadsheets
6. Bayfield County: Fish Creek watershed stream crossing & maintenance shapefile
7. Bayfield County: Culvert inventory shapefile

...and we're already aware of a few more submissions that will be coming in as projects get completed. Thank you to everyone who submitted thus far!

All of the data have been crosswalked by our data librarian and research specialist Genevieve. She has also mapped all of the data that came with coordinates.

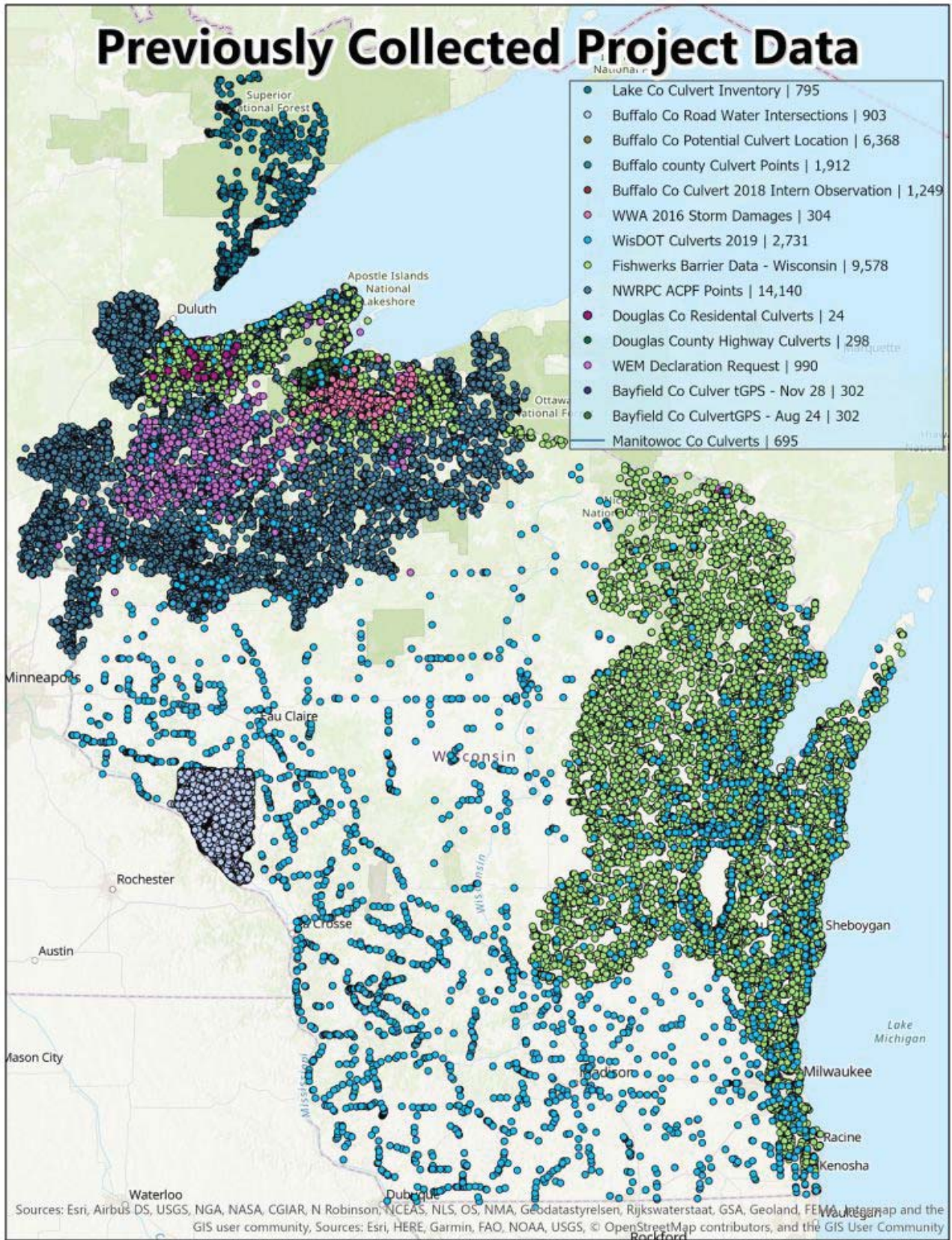


Genevieve’s map of submitted culvert data. Lots going on!

As you can see, our CoP members are active throughout the Lake Superior coast and beyond. The overlap among these data points is a shining example of the number and variety of stakeholders interested in culvert mapping — the potential benefits of increased collaboration and communication are clear.

Genevieve also put together a map of **all** culvert data held in our library:

Previously Collected Project Data



Culvert data across Wisconsin and into Minnesota.

Impressive – and colorful. As you can see, culvert inventories crisscross the state for fish passage studies, transportation management, storm damage assessments, and more.

Be sure to stay tuned to the WICDI blog for a recap of our second workshop, coming soon. In the meantime, feel free to continue to submit your culvert data, contact us about a culvert project you'd like to get on our radar, or get in touch if you'd like more information about WICDI.